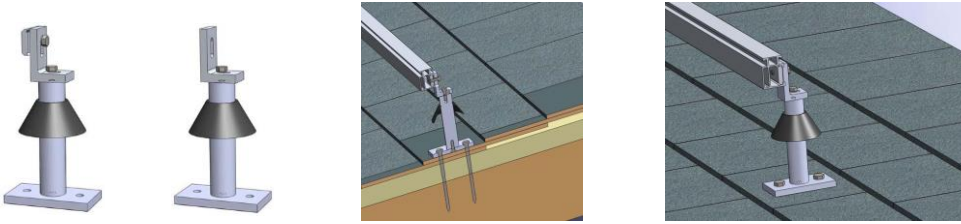


Standoff



Parts:

- One (1) standoff (3", 4", 6" or 7" tall)
- One (1) standoff L-foot
- One (1) rail nut
- Two (2) 5/16 X 1" stainless steel bolts/washers



Material: Extruded aluminum alloy 6061-T6

Finish: Clear anodized

Ultimate Tensile: 38 ksi

Yield: 35 ksi

Installation: Use anti-seize and tighten to 12 lb-ft of torque

Load: Loads are given for the standoff to beam connection only; be sure to check load limits for standoff, lag screw, or other attachment method.

Certificate: P.E. certified and Class 'A' Fire Rating

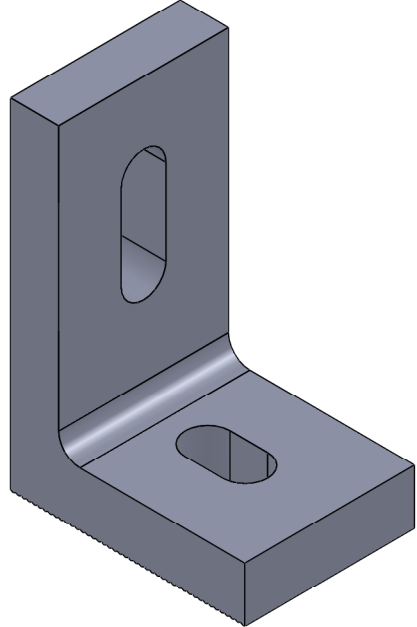
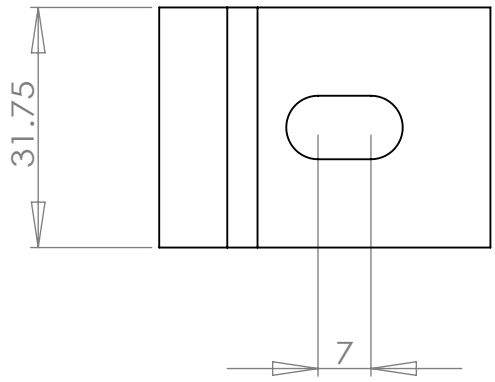
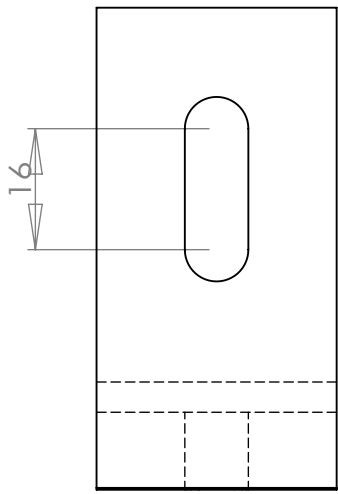
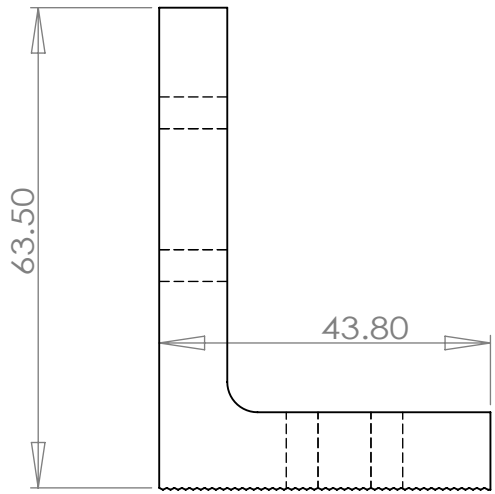
Part #	Description	Finish	Height	Unit Weight (LB)
101-007-103	Standoff - 3" (standoff, small L-foot, rail nut, two 1" bolts/washers, rubber collar)	Clear	5.5" - 6.2" (140 - 157 mm)*	1.02
101-007-104	Standoff - 4" (standoff, small L-foot, rail nut, two 1" bolts/washers, rubber collar)		6.5" - 7.2" (165 - 183 mm)*	1.13
101-007-106	Standoff - 6" (standoff, small L-foot, rail nut, two 1" bolts/washers, rubber collar)		8.5" - 9.2" (216 - 234 mm)*	1.37
101-007-107	Standoff - 7" (standoff, small L-foot, rail nut, two 1" bolts/washers, rubber collar)		9.5" - 10.2" (241 - 259 mm)*	1.49
101-019-103	Standoff - 3" only (standoff, small L-foot, 1" bolt/washer, rubber collar)		3" (76.2 mm)**	0.93
101-019-104	Standoff - 4" only (standoff, small L-foot, 1" bolt/washer, rubber collar)		4" (101.6 mm)**	1.04
101-019-106	Standoff - 6" only (standoff, small L-foot, 1" bolt/washer, rubber collar)		6" (152.4 mm)**	1.28
101-019-107	Standoff - 7" only (standoff, small L-foot, 1" bolt/washer, rubber collar)		7" (177.8 mm)**	1.40

* Height is the spacing between rail top and attachment bottom (the space clearance between bottom of PV module frame and attachment bottom).

** The height is the spacing between standoff shaft top and standoff base bottom.

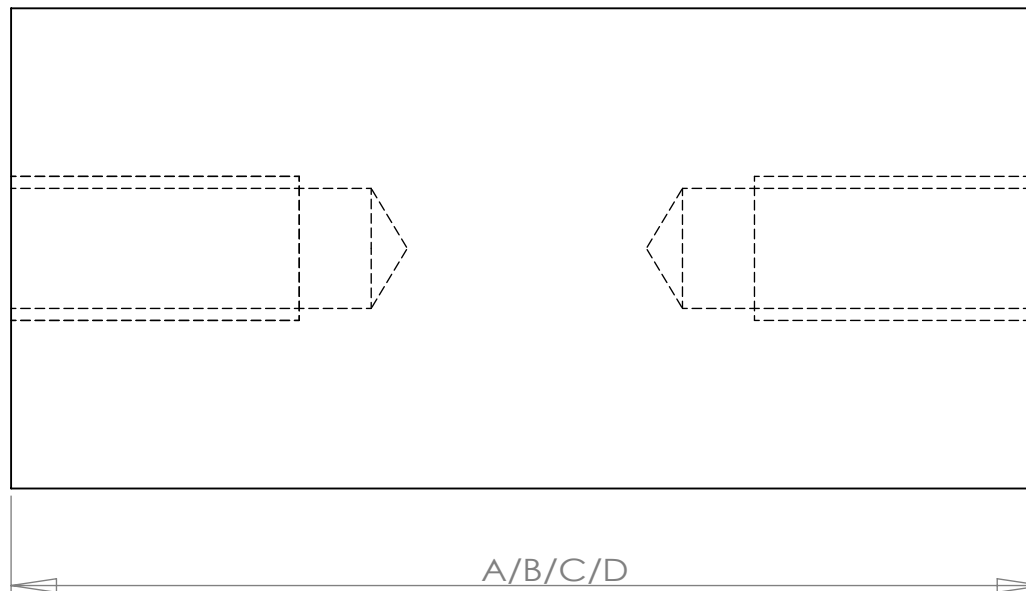
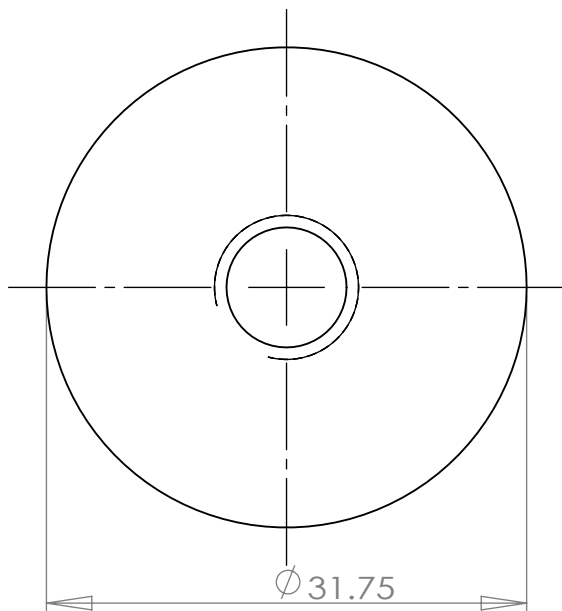
1 2 3 4 5 6

Unit: mm
1 inch = 25.4 mm

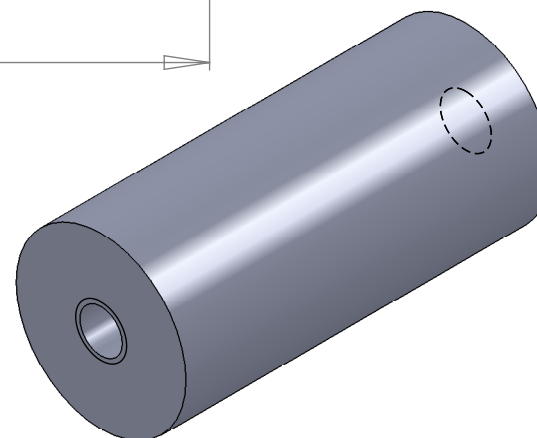


UNLESS OTHERWISE SPECIFIED: DIMENSIONS ARE IN MILLIMETERS SURFACE FINISH: TOLERANCES: LINEAR: ANGULAR:		FINISH:	DEBUR AND BREAK SHARP EDGES	DO NOT SCALE DRAWING	REVISION A
DRAWN	NAME	SIGNATURE	DATE	TITLE: Magerack Part Number: 101-007-103, 101-007-104, 101-007-106, 101-007-107	
CHK'D					
APPV'D					
MFG					
Q.A			MATERIAL: 6061-T6	DWG NO.	L-foot for Standoff
			WEIGHT: 71.86g	SCALE:1:1	SHEET 1 OF 1

1 2



Unit: mm
1 inch = 25.4 mm



Note	A	B	C	D
Part No.	101-007-103 101-019-103	101-007-104 101-019-104	101-007-106 101-019-106	101-007-107 101-019-107
Dimension	68.2	93.6	144.4	169.8
Weight	139.21g	193.51g	302.11g	356.4g

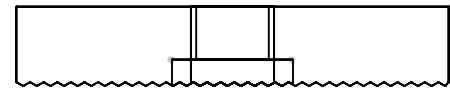
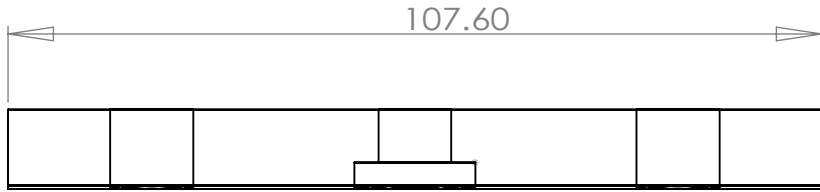
UNLESS OTHERWISE SPECIFIED: DIMENSIONS ARE IN MILLIMETERS SURFACE FINISH: TOLERANCES: LINEAR: ANGULAR:			FINISH:		DEBUR AND BREAK SHARP EDGES		DO NOT SCALE DRAWING		REVISION A		
DRAWN			SIGNATURE		DATE		TITLE: Magerack Part Number: 101-007-103, 101-007-104, 101-007-106, 101-007-107 101-019-103, 101-019-104, 101-019-106, 101-019-107				
CHK'D							DWG NO.		Standoff Shaft		
APPV'D							MATERIAL: 6061-T6				
MFG							WEIGHT:		SCALE: 2:1		SHEET 1 OF 1
Q.A											

1 2 3 4 5 6

A

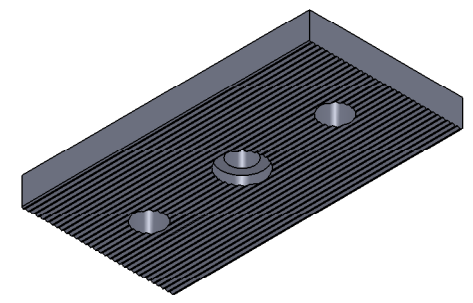
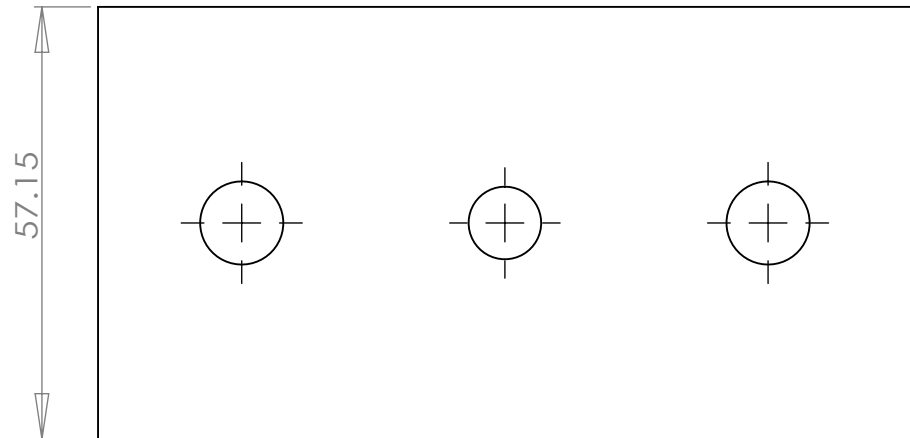
A

Unit: mm
1 inch = 25.4 mm



B

B



C

C

D

UNLESS OTHERWISE SPECIFIED: DIMENSIONS ARE IN MILLIMETERS SURFACE FINISH: TOLERANCES: LINEAR: ANGULAR:		FINISH:		DEBUR AND BREAK SHARP EDGES		DO NOT SCALE DRAWING		REVISION A	
	NAME	SIGNATURE	DATE			TITLE: Magerack Part Number: 101-007-103, 101-007-104, 101-007-106, 101-007-107 101-019-103, 101-019-104, 101-019-106, 101-019-107			
DRAWN						DWG NO. Standoff Base			
CHK'D									
APPV'D									
MFG									
Q.A					MATERIAL: 6061-T6				
					WEIGHT: 161.79g	SCALE:1:1		SHEET 1 OF 1	

1 2