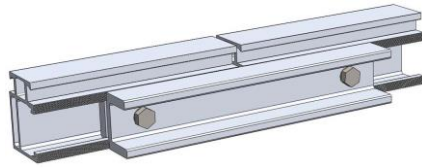
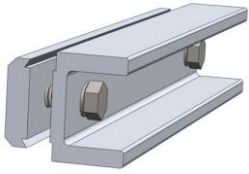
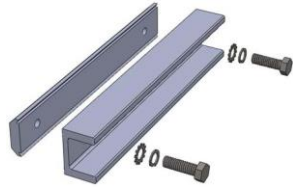


Rail Splice with Integrated Bonding



Rail Splice with Integrated Bonding

- One (1) rail splice
- One (1) rail splice plate
- Two (2) 5/16 X 1-1/4" stainless steel bolts/washers



Material: Extruded aluminum alloy 6061-T6

Finish: Mill finish, clear anodized

Ultimate Tensile: 38 ksi

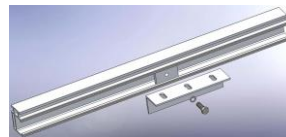
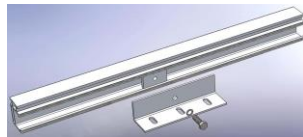
Yield: 35 ksi

Installation: Use anti-seize and tighten to 12 lb-ft of torque

Certificate: UL 2703 compliance, P.E. certified and Class 'A' Fire Rating

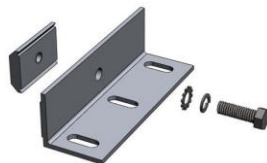
Part #	Description	Finish	Unit Weight (LB)
101-001-301	Rail splice with integrated bonding (splice, plate, two 1-1/4" bolts/washers)	Clear	0.83

Microinverter Mounting Kit with Integrated Bonding



Microinverter Mounting Kit with Integrated Bonding

- One (1) microinverter mounting plate
- One (1) rail nuts
- One (1) 5/16 X 1-1/4" stainless steel bolt/washers



Material: Extruded aluminum alloy 6061-T6

Finish: Mill finish, clear anodized

Ultimate Tensile: 38 ksi

Yield: 35 ksi

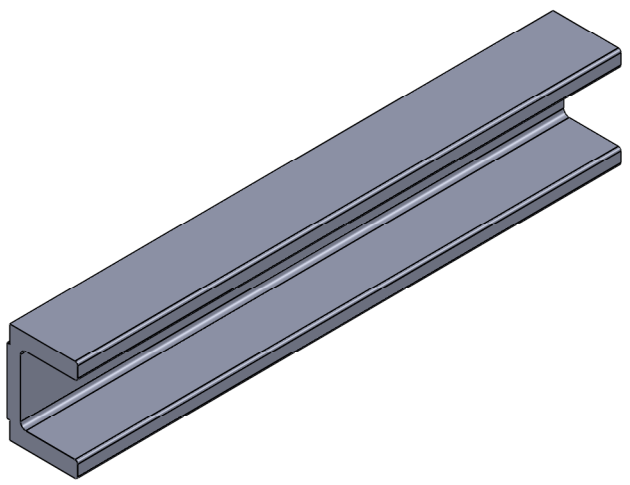
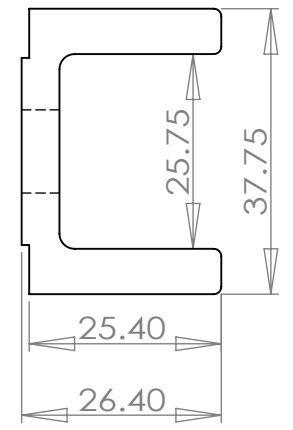
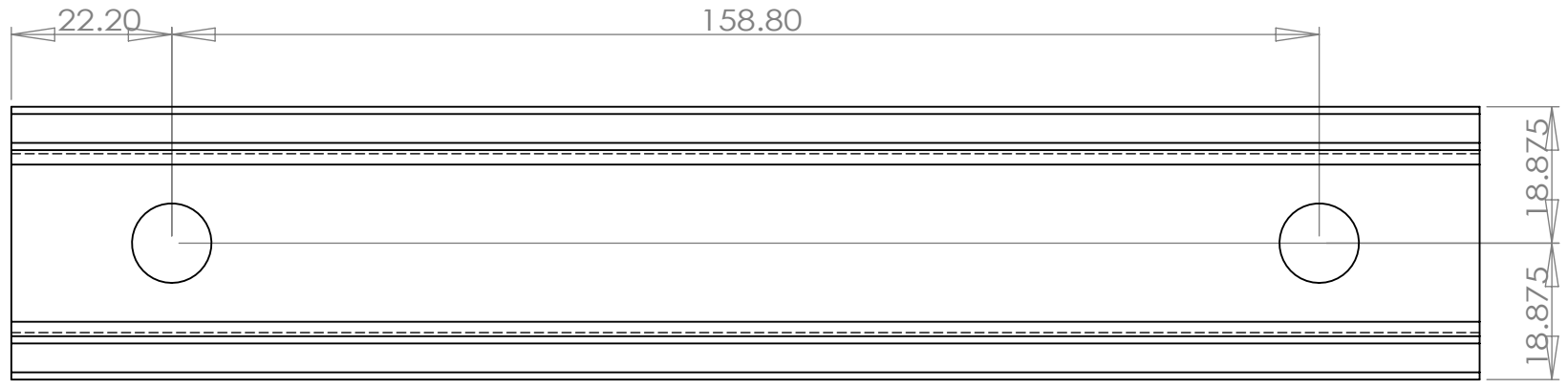
Installation: Use anti-seize and tighten to 12 lb-ft of torque

Certificate: UL 2703 compliance, P.E. certified and Class 'A' Fire Rating

Part #	Description	Finish	Unit Weight (LB)
101-010-101	Microinverter mounting kit with integrated bonding (mounting platform, rail nut, 1-1/4" bolt/washers)	Clear	0.28

1 2 3 4 5 6

Unit: mm
1 inch = 25.4 mm



UNLESS OTHERWISE SPECIFIED:
DIMENSIONS ARE IN MILLIMETERS
SURFACE FINISH:
TOLERANCES:
LINEAR:
ANGULAR:

FINISH:

DEBUR AND
BREAK SHARP
EDGES

DO NOT SCALE DRAWING

REVISION A

	NAME	SIGNATURE	DATE		
DRAWN					
CHK'D					
APPV'D					
MFG					
Q.A				MATERIAL:	
				6061-T6	

TITLE: **Magerack**
Part Number:
101-001-301
101-001-321

DWG NO. **Rail Splice**

WEIGHT: 235.22g

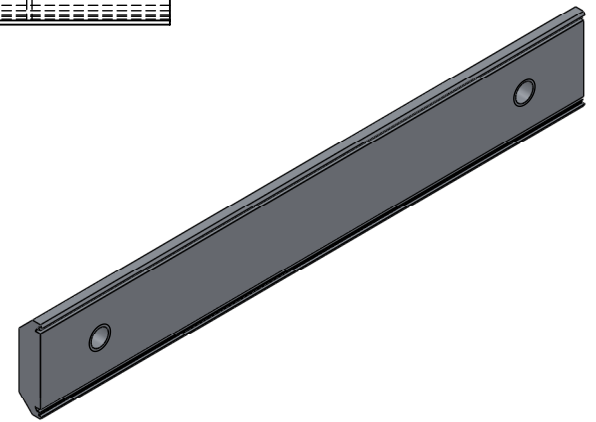
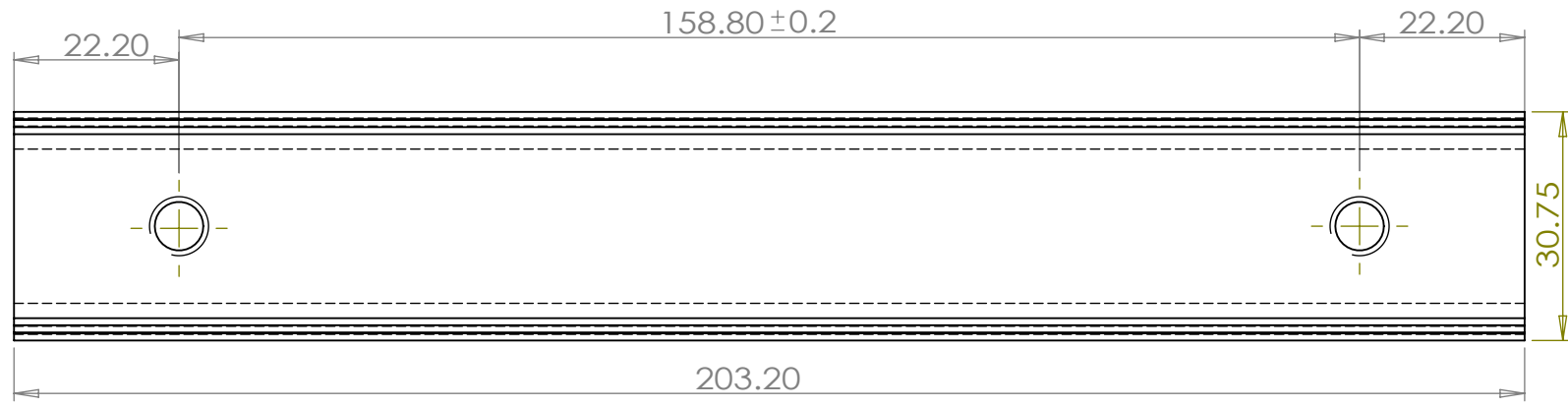
SCALE: 1:1

SHEET 1 OF 1

1 2

1 2 3 4 5 6

Unit: mm
1 inch = 25.4 mm



UNLESS OTHERWISE SPECIFIED:
DIMENSIONS ARE IN MILLIMETERS
SURFACE FINISH:
TOLERANCES:
LINEAR:
ANGULAR:

FINISH:

DEBUR AND
BREAK SHARP
EDGES

DO NOT SCALE DRAWING

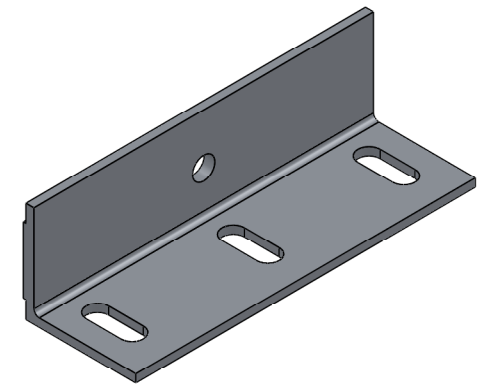
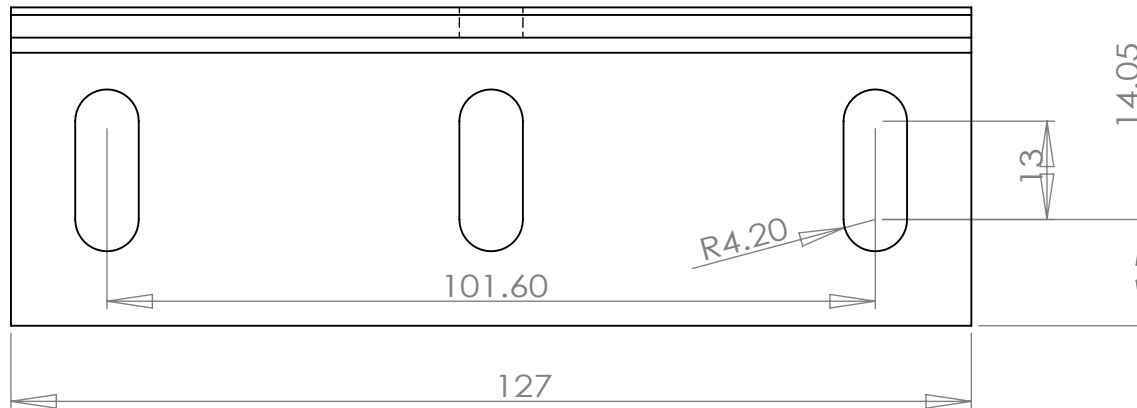
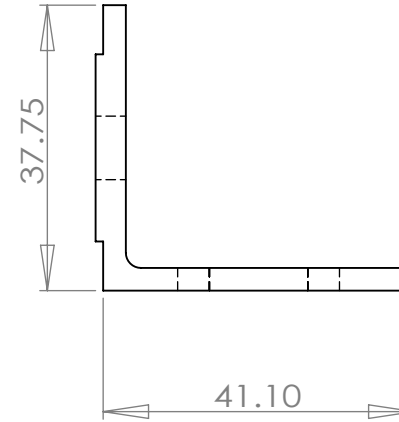
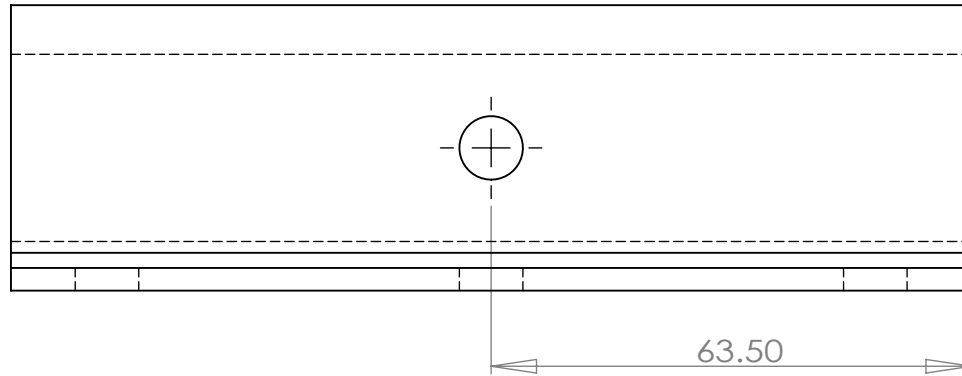
REVISION A

	NAME	SIGNATURE	DATE		
DRAWN					
CHK'D					
APPV'D					
MFG					
Q.A				MATERIAL:	
				6061-T6	

TITLE:
Magerack
Part Number:
101-001-301

DWG NO. **Rail Splice**

Unit: mm
1 inch = 25.4 mm



UNLESS OTHERWISE SPECIFIED:
DIMENSIONS ARE IN MILLIMETERS
SURFACE FINISH:
TOLERANCES:
LINEAR:
ANGULAR:

FINISH:

DEBUR AND
BREAK SHARP
EDGES

DO NOT SCALE DRAWING

REVISION A

	NAME	SIGNATURE	DATE		
DRAWN					
CHK'D					
APPV'D					
MFG					
Q.A					

TITLE:
Magerack
Part Number:
101-010-101

MATERIAL:
6061-T6

DWG NO.
Microinverter Mounting Kit

WEIGHT: 82.21g

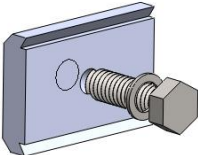
SCALE: 1:1

SHEET 1 OF 1

Rail Nut with Integrated Bonding

Rail Nut

- One (1) rail nut
- One (1) 5/16 X 1-1/4" stainless steel bolt/washer



Material: Extruded aluminum alloy 6061-T6
Finish: Mill finish
Ultimate Tensile: 38 ksi
Yield: 35 ksi
Installation: Use anti-seize and tighten to 12 lb-ft of torque
Certificate: UL 2703 compliance, P.E. certified and Class 'A' Fire Rating

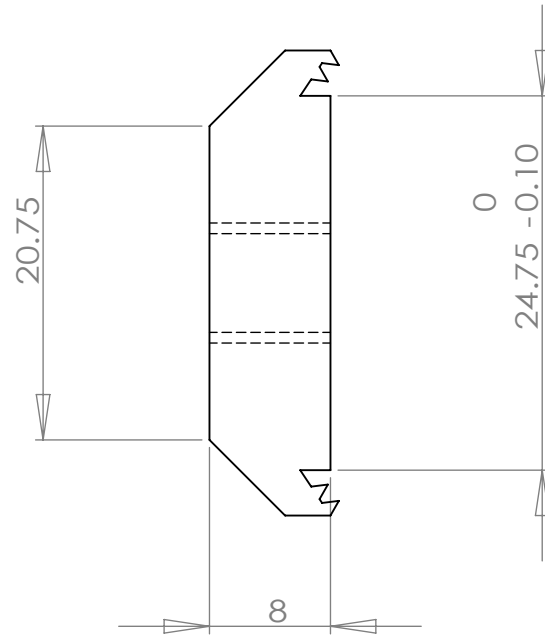
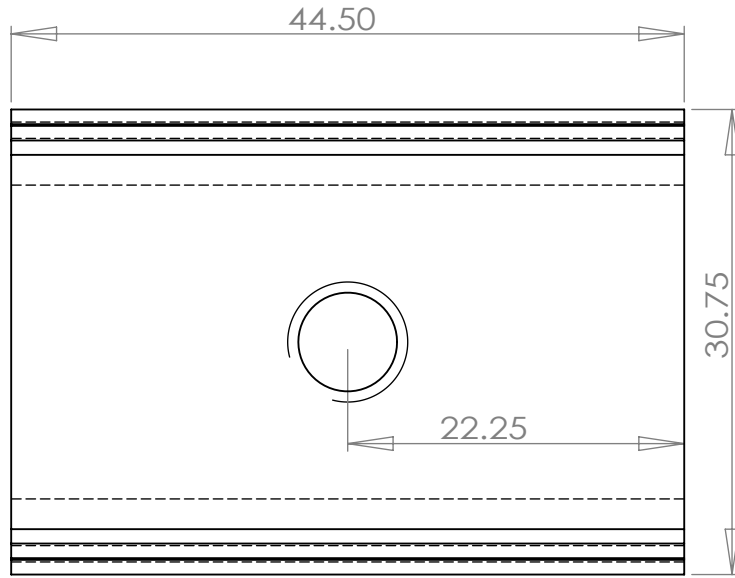
Part #	Description	Finish	Unit Weight (LB)
101-001-201	Rail nut (rail nut, 1-1/4" bolt/washer)	Clear	0.085

Wire Clip

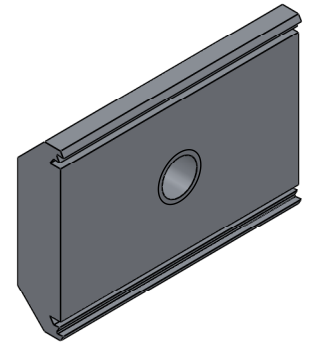
Material: 304 stainless steel
Installation: Attach to rail and hold wires



Part #	Description	Finish	Unit Weight (LB)
101-010-105	Wire clip is attached to rail and holds wires	Clear	0.01



Unit: mm
1 inch = 25.4 mm



UNLESS OTHERWISE SPECIFIED: DIMENSIONS ARE IN MILLIMETERS SURFACE FINISH: TOLERANCES: LINEAR: ANGULAR:				FINISH:		DEBUR AND BREAK SHARP EDGES		DO NOT SCALE DRAWING		REVISION A	
DRAWN				SIGNATURE		DATE		TITLE: Magerack Part Number: 101-001-201			
CHK'D											
APPV'D											
MFG											
Q.A						MATERIAL: 6061-T6		DWG NO. Rail Nut			
						WEIGHT: 25.35g		SCALE: 2:1		SHEET 1 OF 1	