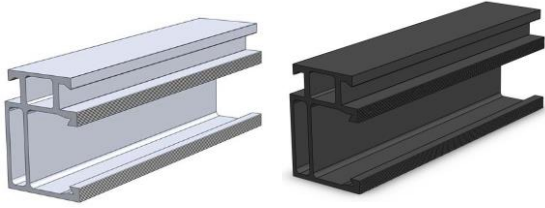


Rails



Material: Extruded aluminum alloy 6061-T6

Finish: Clear or black anodized

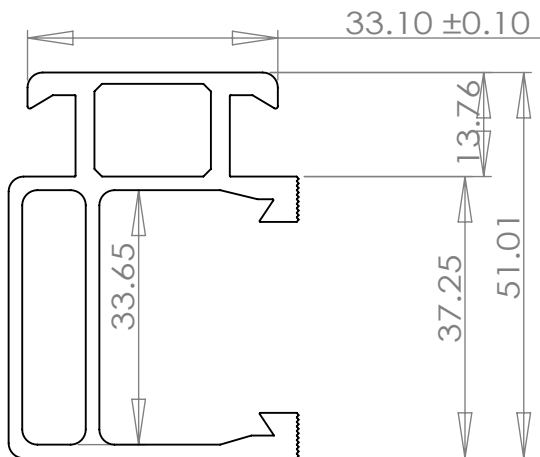
Ultimate Tensile: 38 ksi

Yield: 35 ksi

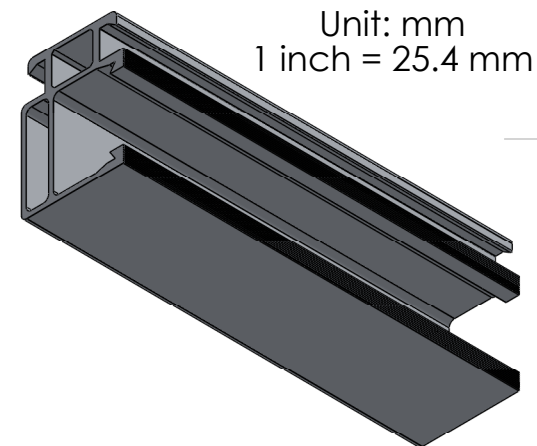
Installation: Use anti-seize and tighten to 12 lb-ft of torque

Certificate: UL 2703 compliance, P.E. certified and Class 'A' Fire Rating

| Part # | Length | Finish | Weight (LB) |
|-------------|--------------|--------|-------------|
| 101-001-110 | 10.5' (126") | Clear | 7.89 |
| 101-001-112 | 12' (144") | | 9.07 |
| 101-001-114 | 14' (168") | | 10.58 |
| 101-001-117 | 17' (204") | | 12.85 |
| 101-001-120 | 20' (240") | | 15.08 |
| 101-001-210 | 10.5' (126") | Black | 7.89 |
| 101-001-212 | 12' (144") | | 9.07 |
| 101-001-214 | 14' (168") | | 10.58 |
| 101-001-217 | 17' (204") | | 12.85 |
| 101-001-220 | 20' (240") | | 15.08 |



| Note | Part No. | Dimension | Weight |
|--------|----------------------------|-----------|-----------|
| A/10.5 | 101-001-110 101-001-210 | 3200 | 3.827kg |
| B/12 | 101-001-112 101-001-212 | 3658 | 4.37474kg |
| C/14 | 101-001-114 101-001-214 | 4267 | 5.10307kg |
| D/17 | 101-001-117 101-001-217 | 5182 | 6.19735kg |
| E/20 | 101-001-120 101-001-220 | 6096 | 7.29044kg |



| | | | | | | | | | |
|---|--|-----------|--|-----------------------------------|--|---|--|---------------|--|
| UNLESS OTHERWISE SPECIFIED: DIMENSIONS ARE IN MILLIMETERS SURFACE FINISH: TOLERANCES: LINEAR: ANGULAR: | | FINISH: | | DEBUR AND BREAK SHARP EDGES | | DO NOT SCALE DRAWING | | REVISION A | |
| DRAWN | | SIGNATURE | | DATE | | TITLE: Magerack Part Number: 101-001-110, 101-001-112, 101-001-114, 101-001-117, 101-001-120 101-001-210, 101-001-212, 101-001-214, 101-001-217, 101-001-220 | | | |
| CHK'D | | | | | | DWG NO. | | Rail | |
| APPV'D | | | | | | MATERIAL: 6061-T6 | | A4 | |
| MFG | | | | | | WEIGHT: 1.21716kg/m | | SCALE: 1:1 | |
| Q.A | | | | | | SHEET 1 OF 1 | | | |