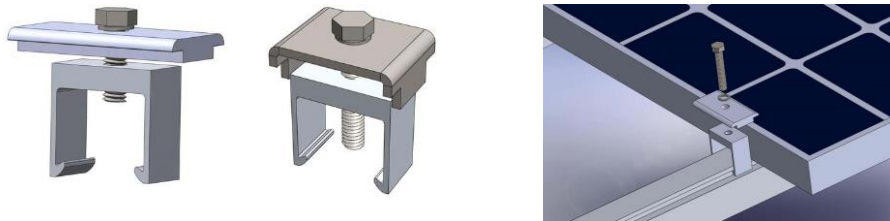
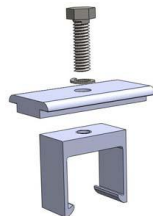


Mid Clamps



Mid Clamp:

- One (1) mid clamp top
- One (1) mid clamp bottom
- One 5/16 1-1/2" (or 5/16 1-1/4") stainless steel bolt/washer
- P.E. certified and Class 'A' Fire Rating



Mid Clamp with Integrated Bonding:

- One (1) stainless steel mid clamp top
- One (1) mid clamp bottom
- One 5/16 1-5/8" stainless steel bolt/washers
- UL 2703 compliance, P.E. certified and Class 'A' Fire Rating



Material: Extruded aluminum alloy 6061-T6 or 304 stainless steel

Finish: Mill finish, clear or black anodized

Ultimate Tensile: 38 ksi

Yield: 35 ksi

Installation: Use anti-seize and tighten to 12 lb-ft of torque

Part #	Description	Finish	PV Module Frame Depth	Unit Weight (LB)
101-002-101	Mid clamp (mid clamp top and bottom, 1-1/2" bolt/washer)	Clear	≥1.34" (34 mm)	0.16
101-002-201		Black		
101-002-202	Mid clamp (mid clamp top and bottom, 1-1/4" bolt/washer)	Black	<1.34" (34 mm)	0.16
101-002-301	Mid clamp with integrated bonding (mid clamp top and bottom, 1-5/8" bolt/washers)	Clear	≥1.22" (31 mm)	0.20
101-002-401		Black		

1

2

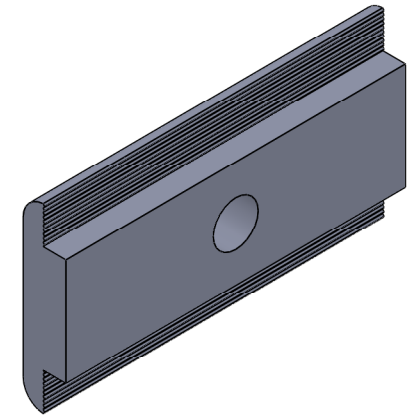
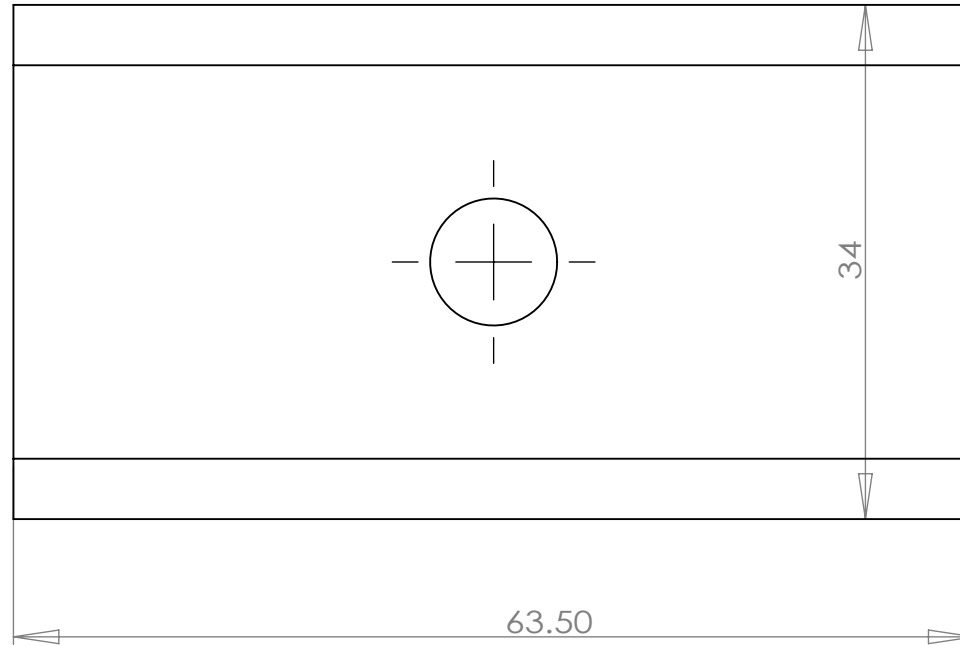
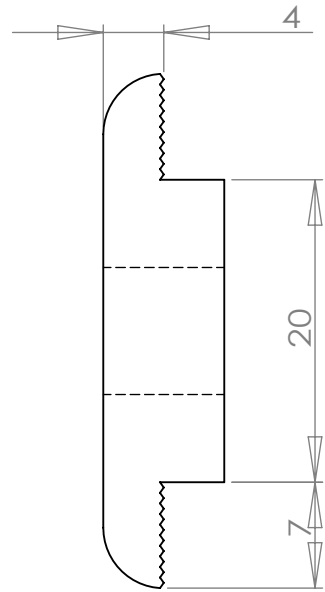
3

4

5

6

Unit: mm
1 inch = 25.4 mm



UNLESS OTHERWISE SPECIFIED:
DIMENSIONS ARE IN MILLIMETERS
SURFACE FINISH:
TOLERANCES:
LINEAR:
ANGULAR:

FINISH:

DEBUR AND
BREAK SHARP
EDGES

DO NOT SCALE DRAWING

REVISION

A

	NAME	SIGNATURE	DATE		
DRAWN					
CHK'D					
APPV'D					
MFG					
Q.A					

TITLE: **Magerack**
Part Number:
101-002-101
101-002-201

DWG NO. **Mid Clamp Top**

WEIGHT: 33.51g

SCALE: 2:1

SHEET 1 OF 1

1

2

A

A

B

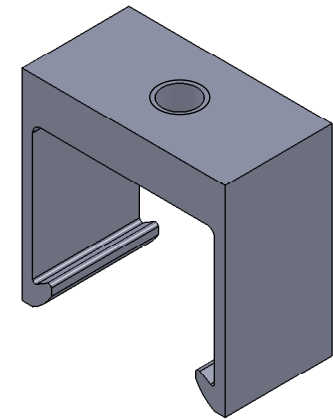
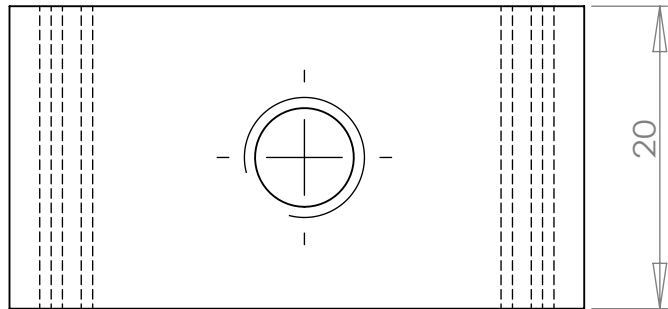
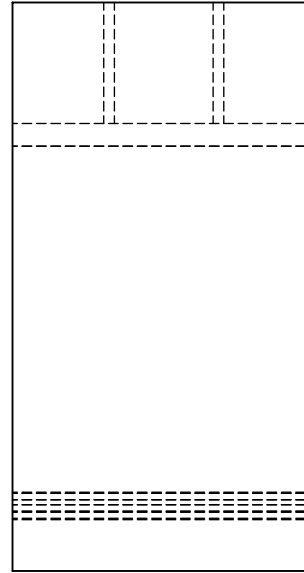
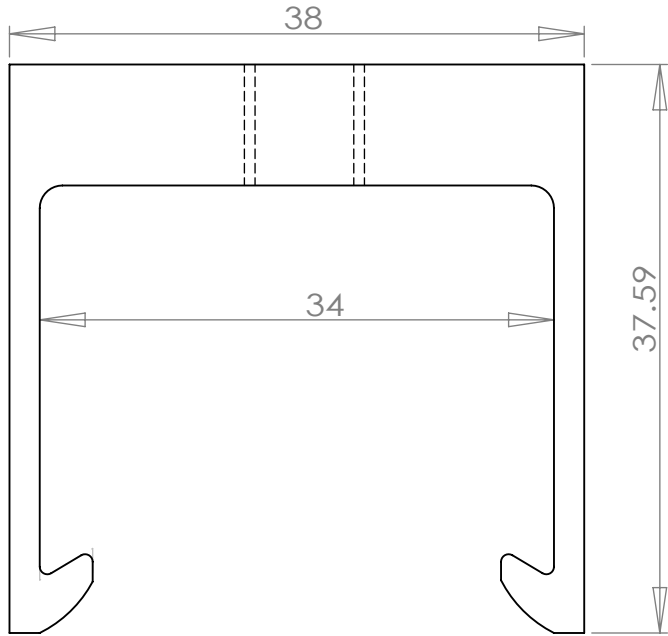
B

C

C

D

Unit: mm
1 inch = 25.4 mm



UNLESS OTHERWISE SPECIFIED:
DIMENSIONS ARE IN MILLIMETERS
SURFACE FINISH:
TOLERANCES:
LINEAR:
ANGULAR:

FINISH:

DEBUR AND
BREAK SHARP
EDGES

DO NOT SCALE DRAWING

REVISION A

	NAME	SIGNATURE	DATE		
DRAWN					
CHK'D					
APPV'D					
MFG					
Q.A					

TITLE:
Magerack
Part Number:
101-002-101
101-002-201

DWG NO. **Mid Clamp Bottom**

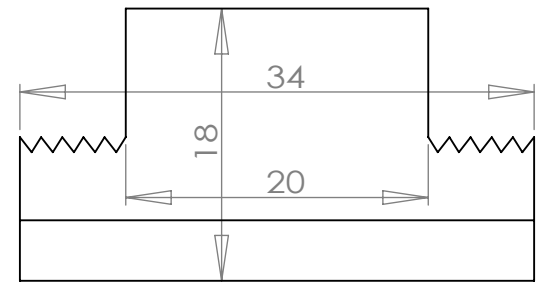
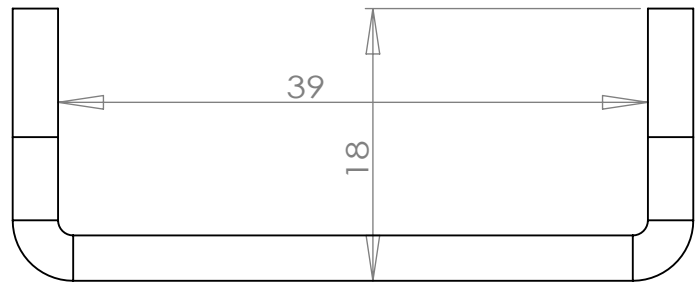
WEIGHT: 23.00g

SCALE:2:1

SHEET 1 OF 1

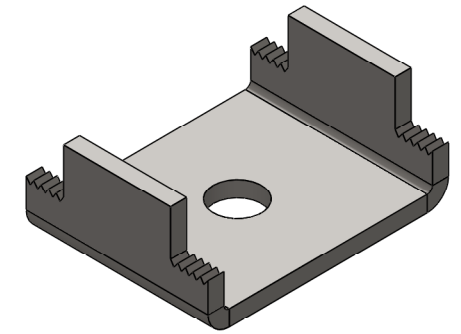
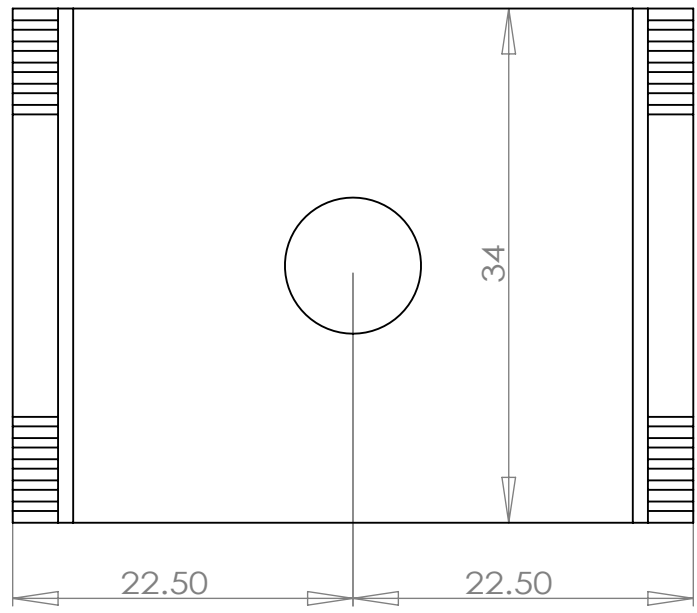
1 2 3 4 5 6

A



Unit: mm
1 inch = 25.4 mm

B



C

D

UNLESS OTHERWISE SPECIFIED:
DIMENSIONS ARE IN MILLIMETERS
SURFACE FINISH:
TOLERANCES:
LINEAR:
ANGULAR:

FINISH:

DEBUR AND
BREAK SHARP
EDGES

DO NOT SCALE DRAWING

REVISION A

	NAME	SIGNATURE	DATE		
DRAWN					
CHK'D					
APPV'D					
MFG					
Q.A					

TITLE:
Magerack
Part Number:
101-002-301, 101-002-401

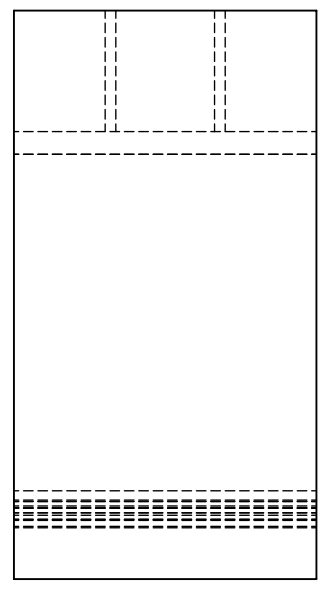
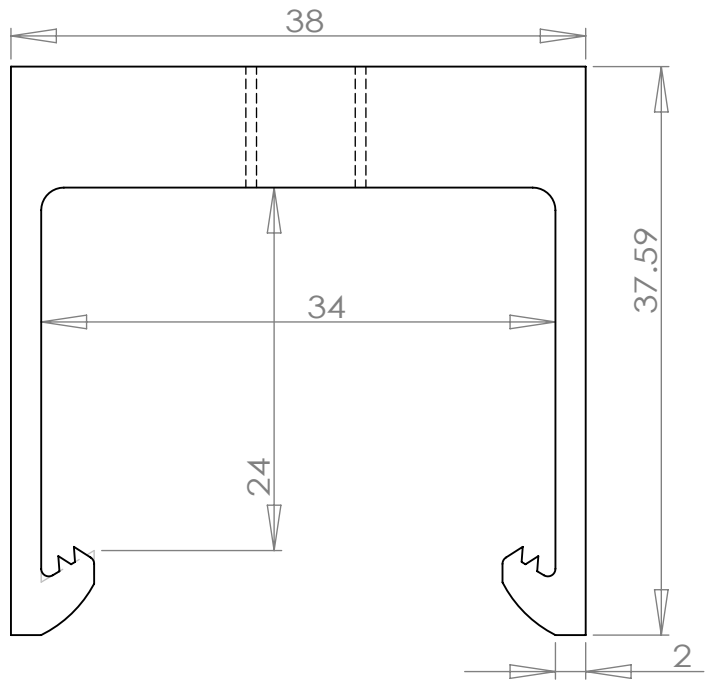
DWG NO. **Mid Clamp Top**

WEIGHT: 51.87g

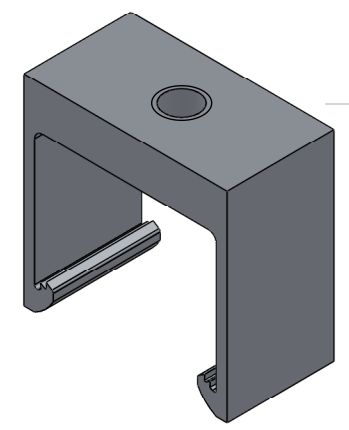
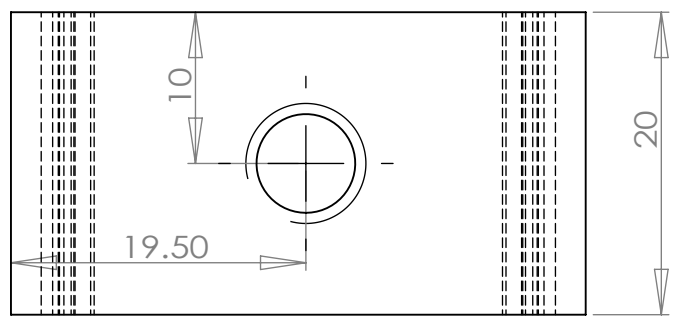
SCALE:2:1

SHEET 1 OF 1

1 2



Unit: mm
1 inch = 25.4 mm



UNLESS OTHERWISE SPECIFIED:
DIMENSIONS ARE IN MILLIMETERS
SURFACE FINISH:
TOLERANCES:
LINEAR:
ANGULAR:

FINISH:

DEBUR AND
BREAK SHARP
EDGES

DO NOT SCALE DRAWING

REVISION A

	NAME	SIGNATURE	DATE		
DRAWN					
CHK'D					
APPV'D					
MFG					
Q.A					

TITLE: Magerack
Part Number:
101-002-301
101-002-401

DWG NO. Mid Clamp Bottom

WEIGHT: 24.15g

SCALE:2:1

SHEET 1 OF 1