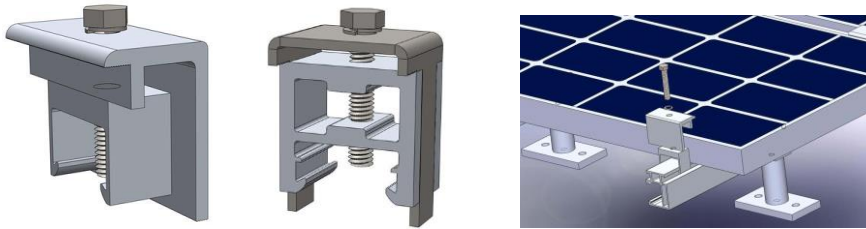


# End Clamps



**End Clamp:**

- One (1) end clamp top (various heights)
- One (1) end clamp bottom
- One (1) 5/16 1-1/4" (or 5/16 1-1/2", 5/16 1-5/8", 5/15 x 2") stainless steel bolt/washer
- P.E. certified and Class 'A' Fire Rating



**Universal End Clamp with Integrated Bonding:**

- One (1) stainless steel end clamp top
- One (1) end clamp bottom
- One (1) 5/16 1-5/8" (or 5/16 2") stainless steel bolt/washer
- UL 2703 compliance, P.E. certified and Class 'A' Fire Rating



**Material:** Extruded aluminum alloy 6061-T6 and 304 stainless steel

**Finish:** Clear or black anodized

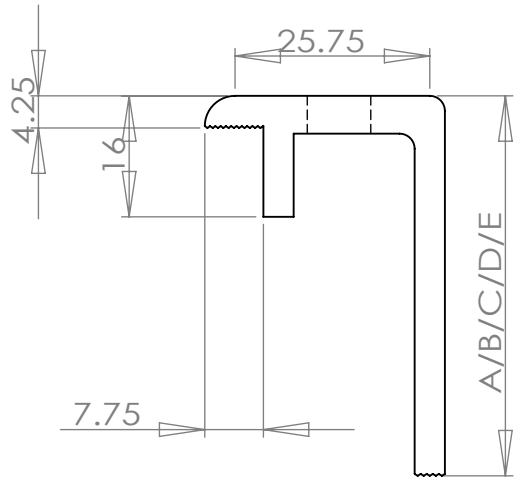
**Ultimate Tensile:** 38 ksi

**Yield:** 35 ksi

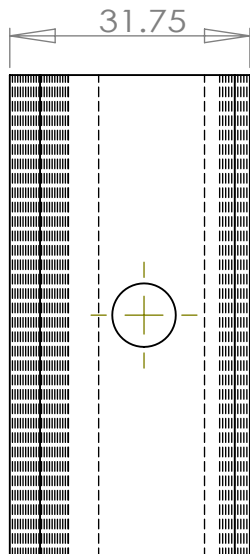
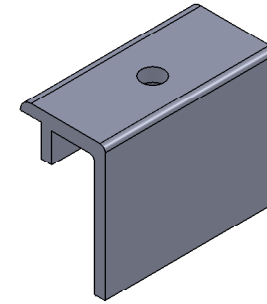
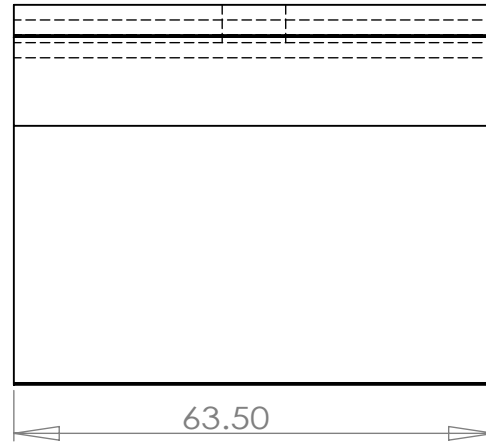
**Installation:** Use anti-seize and tighten to 12 lb-ft of torque

Part #	Description	Finish	PV Module Frame Depth	Unit Weight (LB)
101-003-233	End clamp (end clamp top and bottom, 1-1/4" bolt/washer)	Black	1.22"-1.34" (31-34 mm)	0.19
101-003-235	End clamp (end clamp top and bottom, 1-1/4" bolt/washer)	Black	1.30"-1.42" (33-36 mm)	0.20
101-003-240	End clamp (end clamp top and bottom, 1-1/2" bolt/washer)	Black	1.50"-1.61" (38-41 mm)	0.21
101-003-142	End clamp (end clamp top and bottom, 1-3/4" bolt/washer)	Clear	1.57"-1.69" (40-43 mm)	0.22
101-003-242		Black		
101-003-146	End clamp (end clamp top and bottom, 1-3/4" bolt/washer)	Clear	1.73"-1.85" (44-47 mm)	0.23
101-003-246		Black		
101-003-150	End clamp (end clamp top and bottom, 2" bolt/washer)	Clear	1.89"-2.01" (48-51 mm)	0.24
101-003-250		Black		
101-003-301	Low universal end clamp with integrated bonding (end clamp top and bottom, 1-5/8" bolt/washer)	Clear	1.22"-1.65" (31-42 mm)	0.29
101-003-401	Low universal end clamp (end clamp top and bottom, 1-5/8" bolt/washer)	Black		
101-003-302	Tall universal end clamp with integrated bonding (end clamp top and bottom, 2" bolt/washer)	Clear	1.57"-2.00" (40-51 mm)	0.29
101-003-402	Tall universal end clamp (end clamp top and bottom, 2" bolt/washer)	Black		

1 2 3 4 5 6



Unit: mm  
1 inch = 25.4 mm



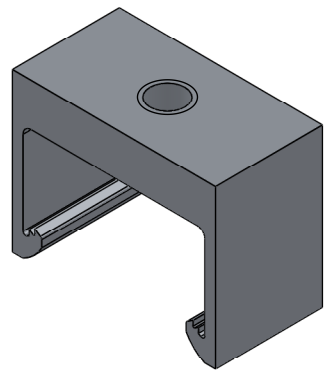
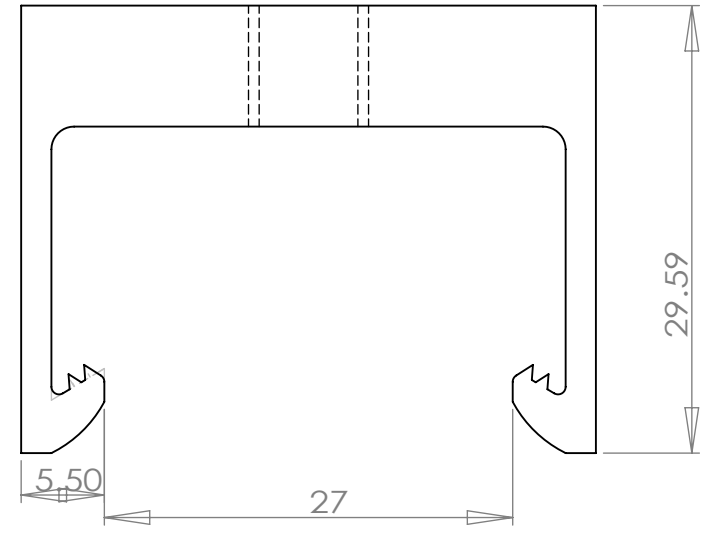
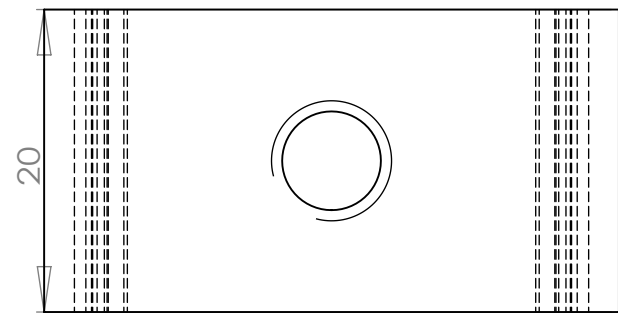
Note	Part No.	Size	Weight
A	101-003-134 101-003-234	38	54.87g
B	101-003-138 101-003-238	42	57.61g
C	101-003-142 101-003-242	46	60.36g
D	101-003-146 101-003-246	50	63.10g
E	101-003-150 101-003-250	54	65.84g

UNLESS OTHERWISE SPECIFIED: DIMENSIONS ARE IN MILLIMETERS SURFACE FINISH: TOLERANCES: LINEAR: ANGULAR:		FINISH:	DEBUR AND BREAK SHARP EDGES	DO NOT SCALE DRAWING	REVISION A
DRAWN	NAME	SIGNATURE	DATE	TITLE: <b>Magerack</b> Part Number: 101-003-134, 101-003-138, 101-003-142, 101-003-146, 101-003-150 101-003-234, 101-003-238, 101-003-242, 101-003-246, 101-003-250	
CHK'D				DWG NO.	<b>End Clamp Top</b>
APPV'D				WEIGHT:	SCALE:1:1
MFG				MATERIAL: 6061-T6	SHEET 1 OF 1
Q.A					

1 2

1 2 3 4 5 6

Unit: mm  
1 inch = 25.4 mm



UNLESS OTHERWISE SPECIFIED:  
DIMENSIONS ARE IN MILLIMETERS  
SURFACE FINISH:  
TOLERANCES:  
LINEAR:  
ANGULAR:

FINISH:

DEBUR AND  
BREAK SHARP  
EDGES

DO NOT SCALE DRAWING      REVISION      A

	NAME	SIGNATURE	DATE		
DRAWN					
CHK'D					
APPV'D					
MFG					
Q.A					

TITLE: **Magerack**  
Part Number:  
101-003-134, 101-003-138, 101-003-142, 101-003-146, 101-003-150  
101-003-234, 101-003-235, 101-003-238, 101-003-240, 101-003-242  
101-003-246, 101-003-250

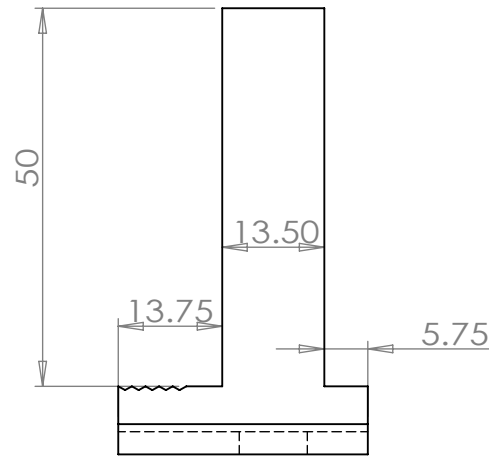
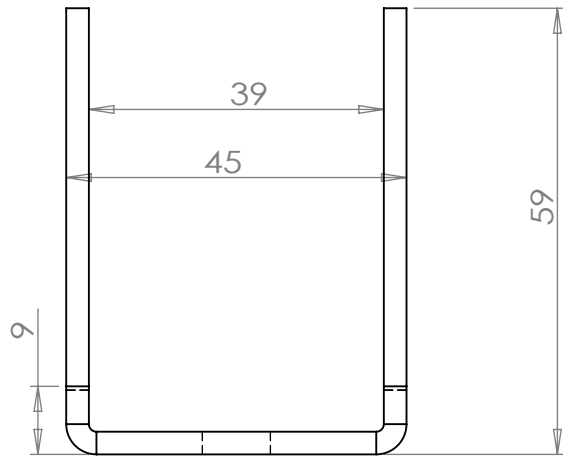
MATERIAL:  
6061-T6

DWG NO.      **End Clamp Bottom**

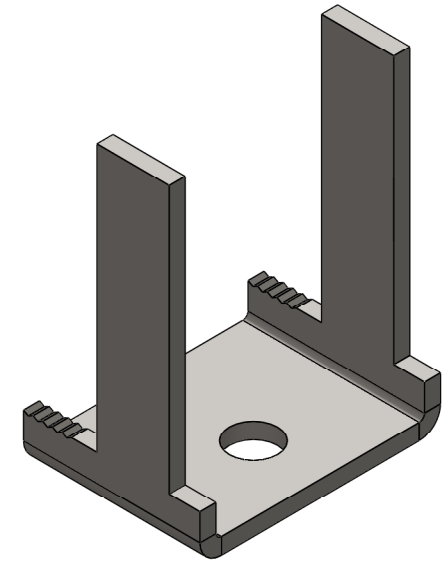
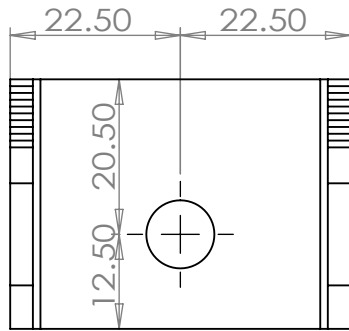
1 2      WEIGHT: 21.71g      SCALE: 2:1      SHEET 1 OF 1

A  
B  
C  
D

A  
B  
C



Unit: mm  
1 inch = 25.4 mm



UNLESS OTHERWISE SPECIFIED:  
DIMENSIONS ARE IN MILLIMETERS  
SURFACE FINISH:  
TOLERANCES:  
LINEAR:  
ANGULAR:

FINISH:

DEBUR AND  
BREAK SHARP  
EDGES

DO NOT SCALE DRAWING

REVISION A

	NAME	SIGNATURE	DATE
DRAWN	yuyang		12/04/2012
CHK'D	Jason S.Xie		12/04/2012
APPV'D			
MFG			
Q.A			

TITLE:  
**Magerack**  
Part Number:  
101-003-301, 101-003-302  
101-003-401, 101-003-402

MATERIAL:  
304

DWG NO. **Universal End Clamp Top**

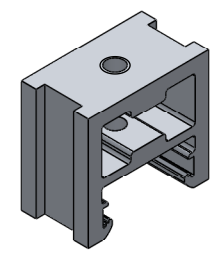
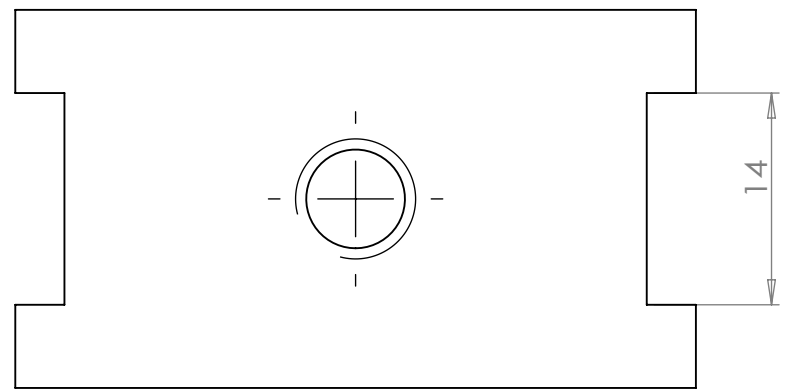
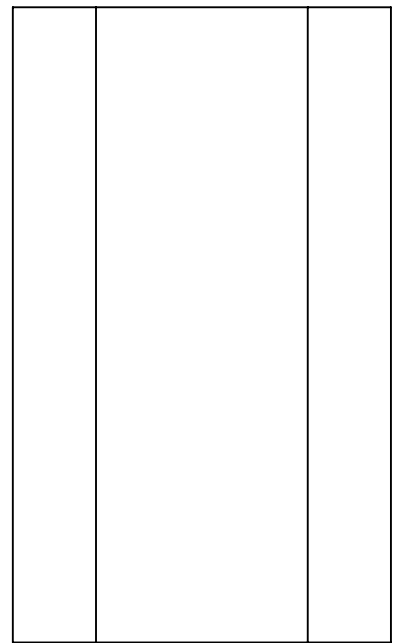
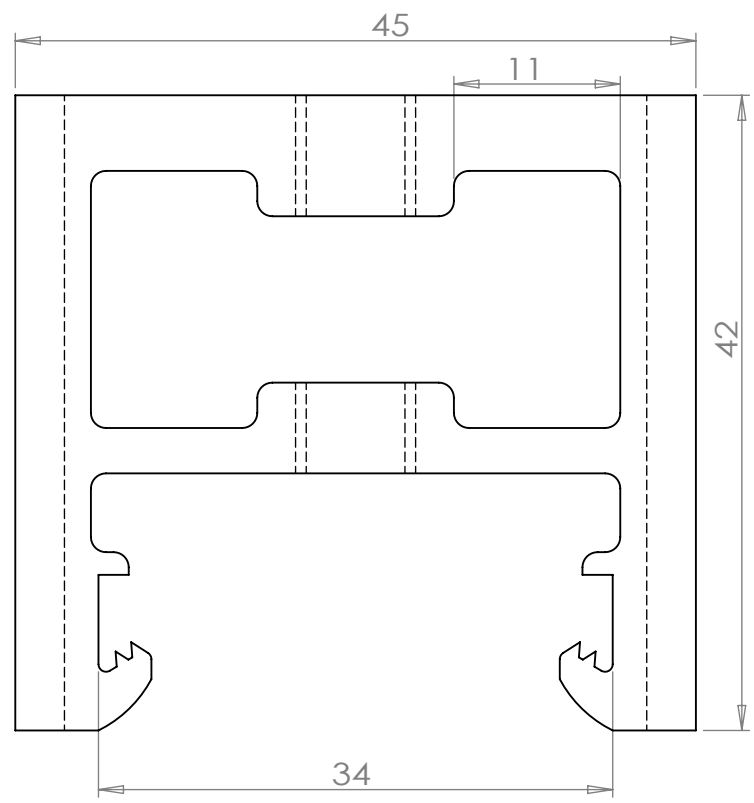
WEIGHT: 74.21g

SCALE: 1:1

SHEET 1 OF 1

1 2 3 4 5 6

Unit: mm  
1 inch = 25.4 mm



UNLESS OTHERWISE SPECIFIED: DIMENSIONS ARE IN MILLIMETERS SURFACE FINISH: TOLERANCES: LINEAR: ANGULAR:			FINISH: DEBUR AND BREAK SHARP EDGES	DO NOT SCALE DRAWING	REVISION A
DRAWN	NAME	SIGNATURE	DATE	TITLE: <b>Magerack</b> Part Number: 101-003-301, 101-003-302 101-003-401, 101-003-402	
CHK'D					
APPV'D					
MFG					
Q.A	MATERIAL: 6061-T6			DWG NO.	Universal End Clamp Bottom
WEIGHT:	55.32g		WEIGHT: 43.84g	SCALE: 1:1	SHEET 1 OF 1

1 2 3