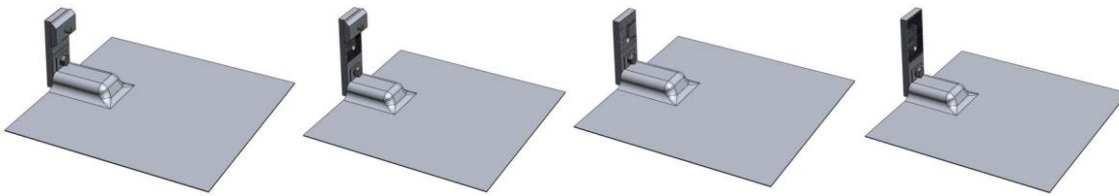


L-foot with Flashing



Parts:

- One (1) L-foot or Tall L-foot
- One (1) rail nut
- One (1) 5/16 1-1/4" stainless steel bolt/washer
- One (1) 5/16 X 3/4" stainless steel bolt/washer
- One (1) L-foot flashing (9"x12" or 18"x18")

Material: Extruded aluminum alloy 6061-T6, aluminum 3003-H14

Finish: Mill finish, clear anodized

Ultimate Tensile: 38 ksi

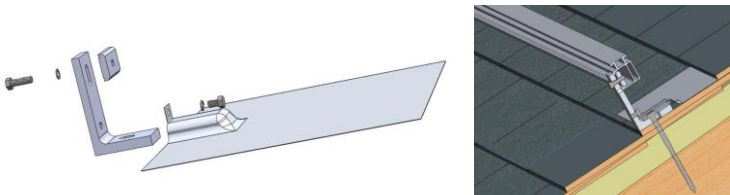
Yield: 35 ksi

Installation: Use anti-seize and tighten to 12 lb-ft of torque

Roof attachment: Use one stainless steel 5/16" lag bolt or 5/16" through bolt

Load: Loads are given for the L-Foot to beam connection only; be sure to check load limits for L-foot, lag screw, or other attachment method.

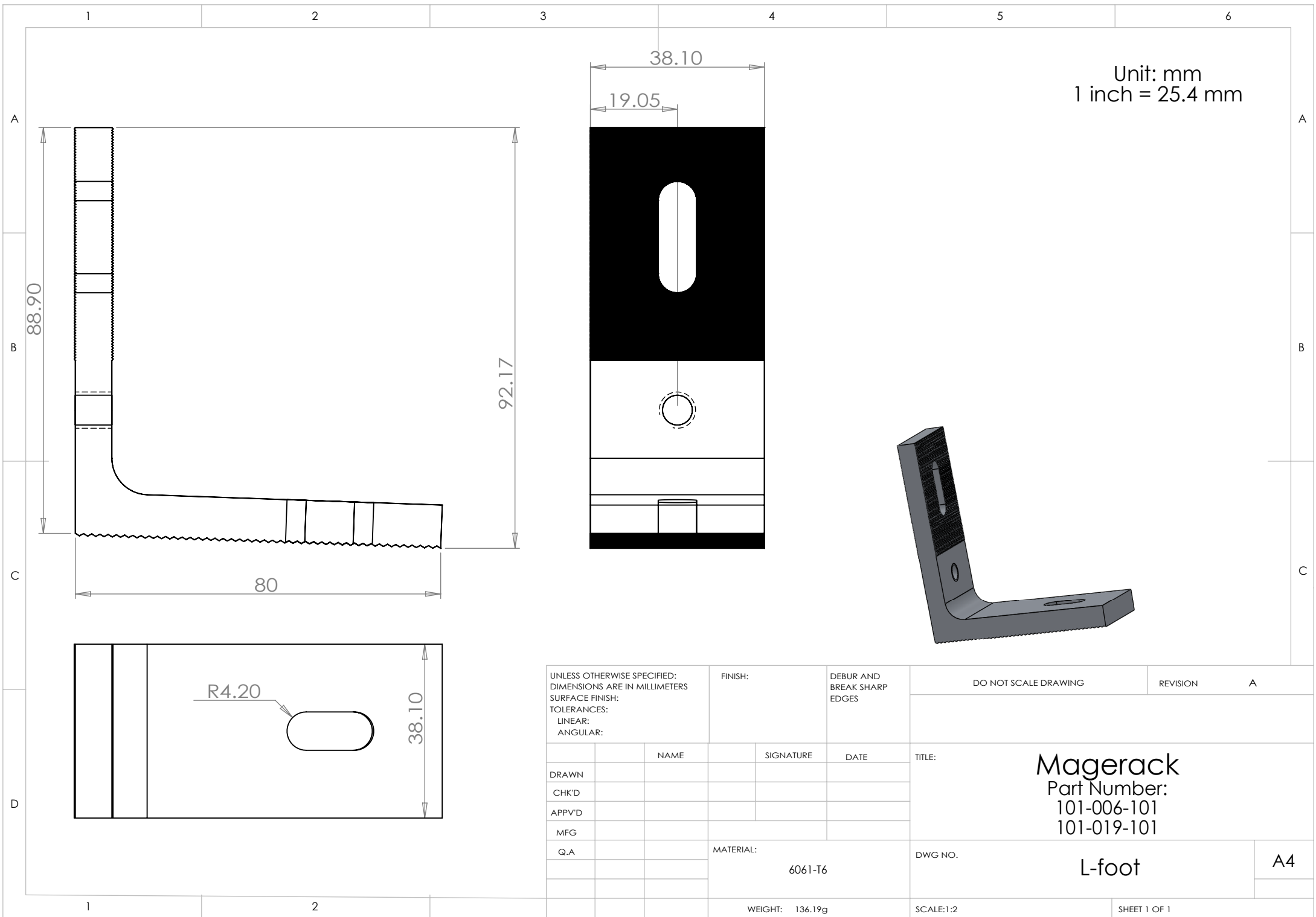
Certificate: P.E. certified and Class 'A' Fire Rating



Part #	Description	Finish	Height	Unit Weight (LB)
101-006-101	L-foot with flashing (L-foot, rail nut, 1-1/4" bolt/washer, flashing, 3/4" bolt/washer)	Clear	3.5" - 4.2" (89 - 107 mm) *	0.77
101-006-102	Tall L-foot with flashing (Tall L-foot, rail nut, 1-1/4" bolt/washer, flashing, 3/4" bolt/washer)		4.5" - 5.2" (114 - 132 mm) *	0.81
101-019-101	L-foot with flashing only (L-foot, flashing, 3/4" bolt/washer)		2.24" - 2.87" (56.9 - 72.9 mm)**	0.68
101-019-102	Tall L-foot with flashing only (Tall L-foot, flashing, 3/4" bolt/washer)		3.24" - 3.87" (82.3 - 98.3 mm)**	0.71

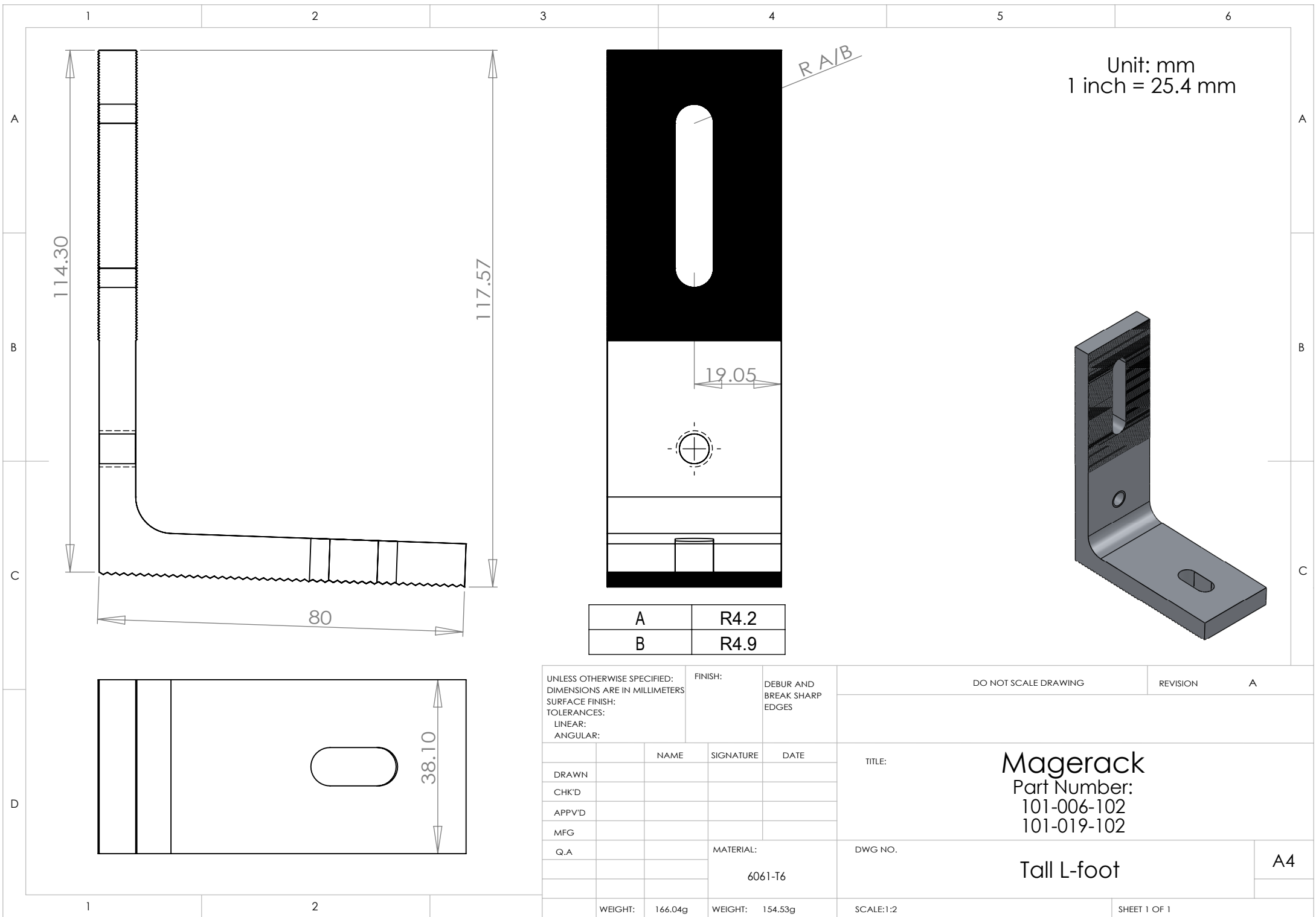
* Height is the spacing between rail top and attachment bottom (the space clearance between bottom of PV module frame and attachment bottom).

** The height is the spacing between bolt slot and attachment bottom.



Unit: mm
1 inch = 25.4 mm

UNLESS OTHERWISE SPECIFIED: DIMENSIONS ARE IN MILLIMETERS SURFACE FINISH: TOLERANCES: LINEAR: ANGULAR:		FINISH:	DEBUR AND BREAK SHARP EDGES	DO NOT SCALE DRAWING	REVISION	A
DRAWN	NAME	SIGNATURE	DATE	Magerack Part Number: 101-006-101 101-019-101		
CHK'D						
APPV'D						
MFG						
Q.A						
		MATERIAL:		DWG NO.	L-foot	
			6061-T6			A4
		WEIGHT:	136.19g	SCALE:1:2	SHEET 1 OF 1	

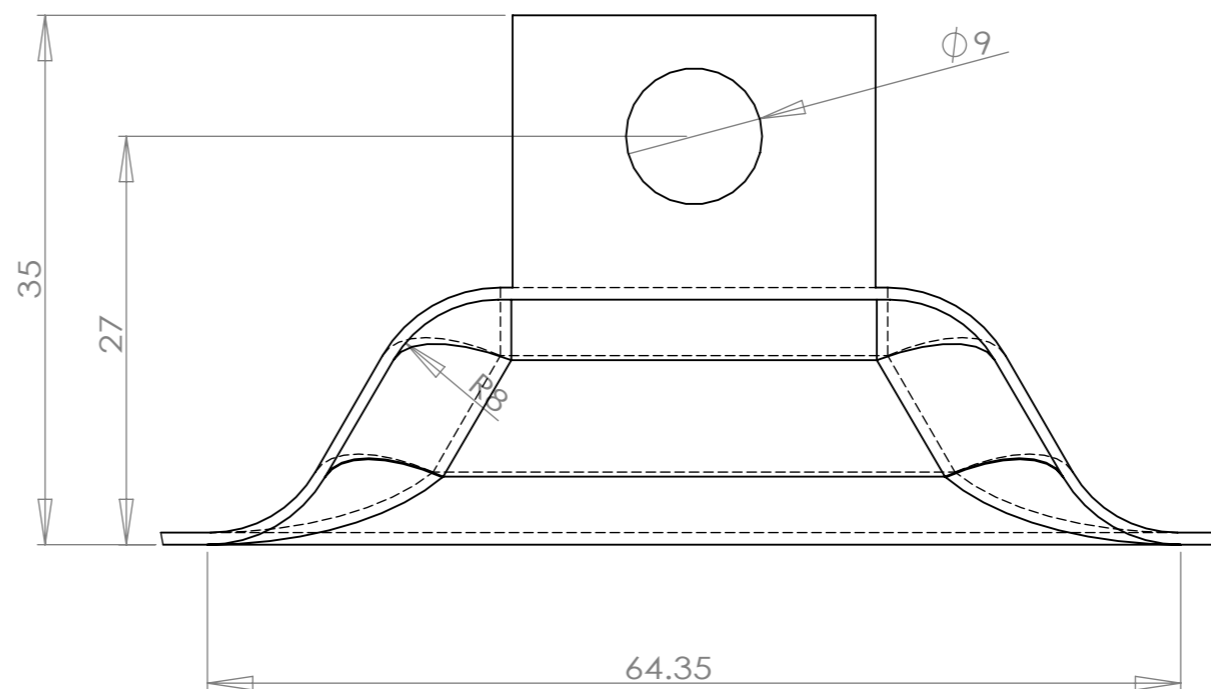
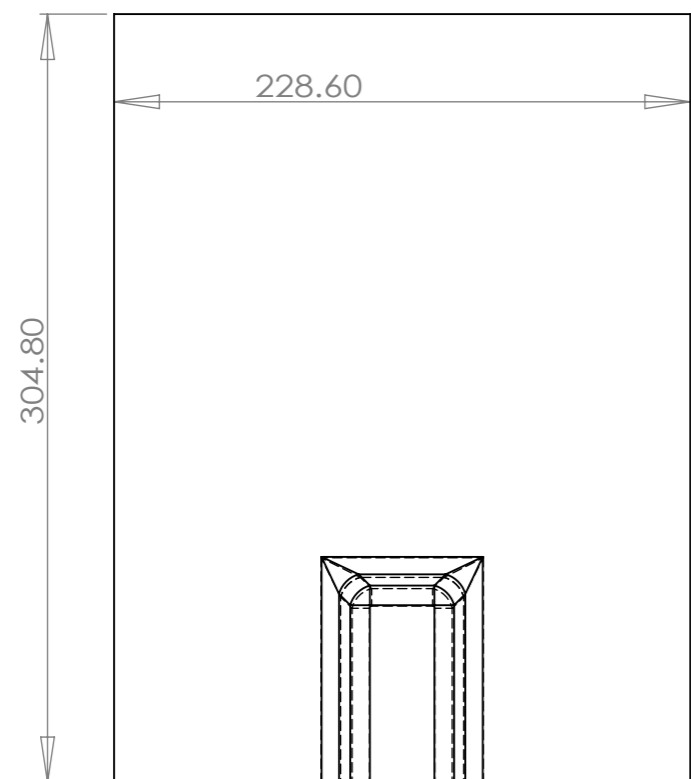
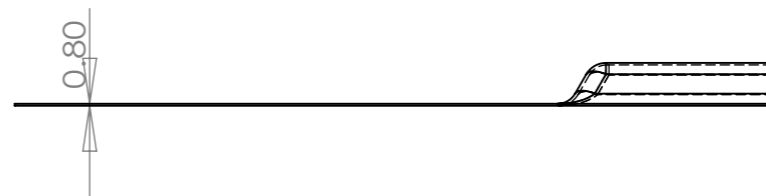
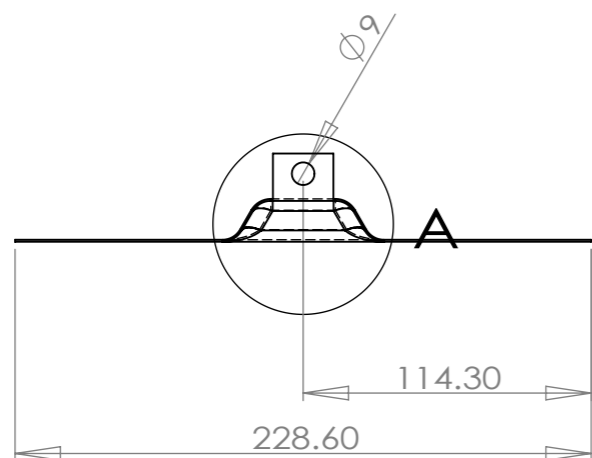


A	R4.2
B	R4.9

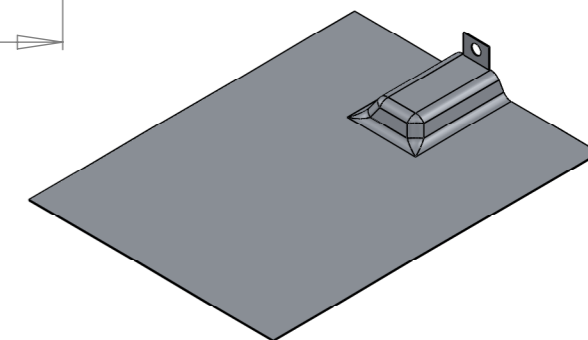
UNLESS OTHERWISE SPECIFIED: DIMENSIONS ARE IN MILLIMETERS		FINISH:	DEBUR AND BREAK SHARP EDGES	
SURFACE FINISH:				
TOLERANCES:				
LINEAR:				
ANGULAR:				
	NAME	SIGNATURE	DATE	
DRAWN				
CHK'D				
APPV'D				
MFG				
Q.A.		MATERIAL:		
		6061-T6		
WEIGHT:	166.04g	WEIGHT:	154.53g	

DO NOT SCALE DRAWING		REVISION	A
TITLE:		Magerack Part Number: 101-006-102 101-019-102	
DWG NO.		Tall L-foot	A4
SCALE:1:2		SHEET 1 OF 1	

Unit: mm
1 inch = 25.4 mm

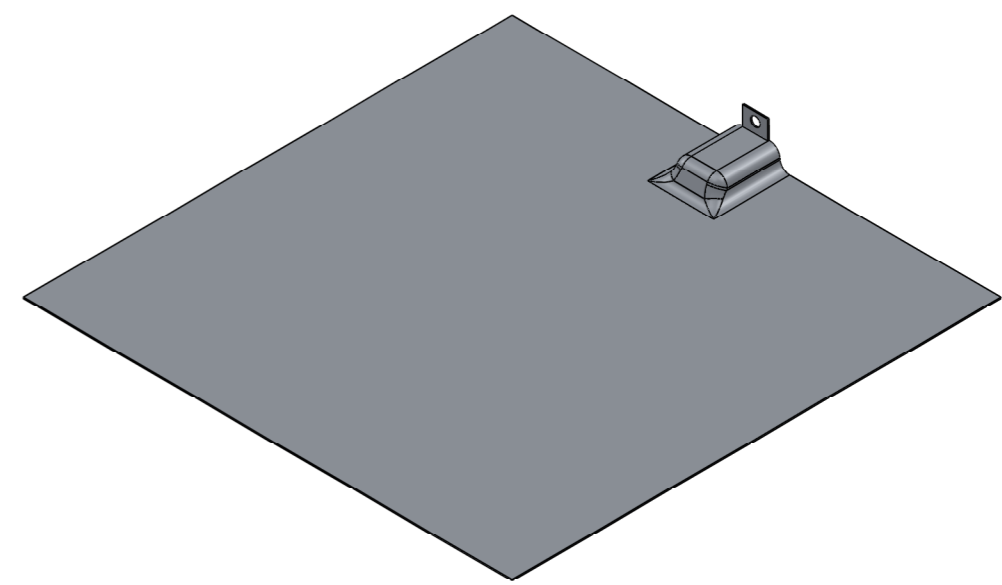
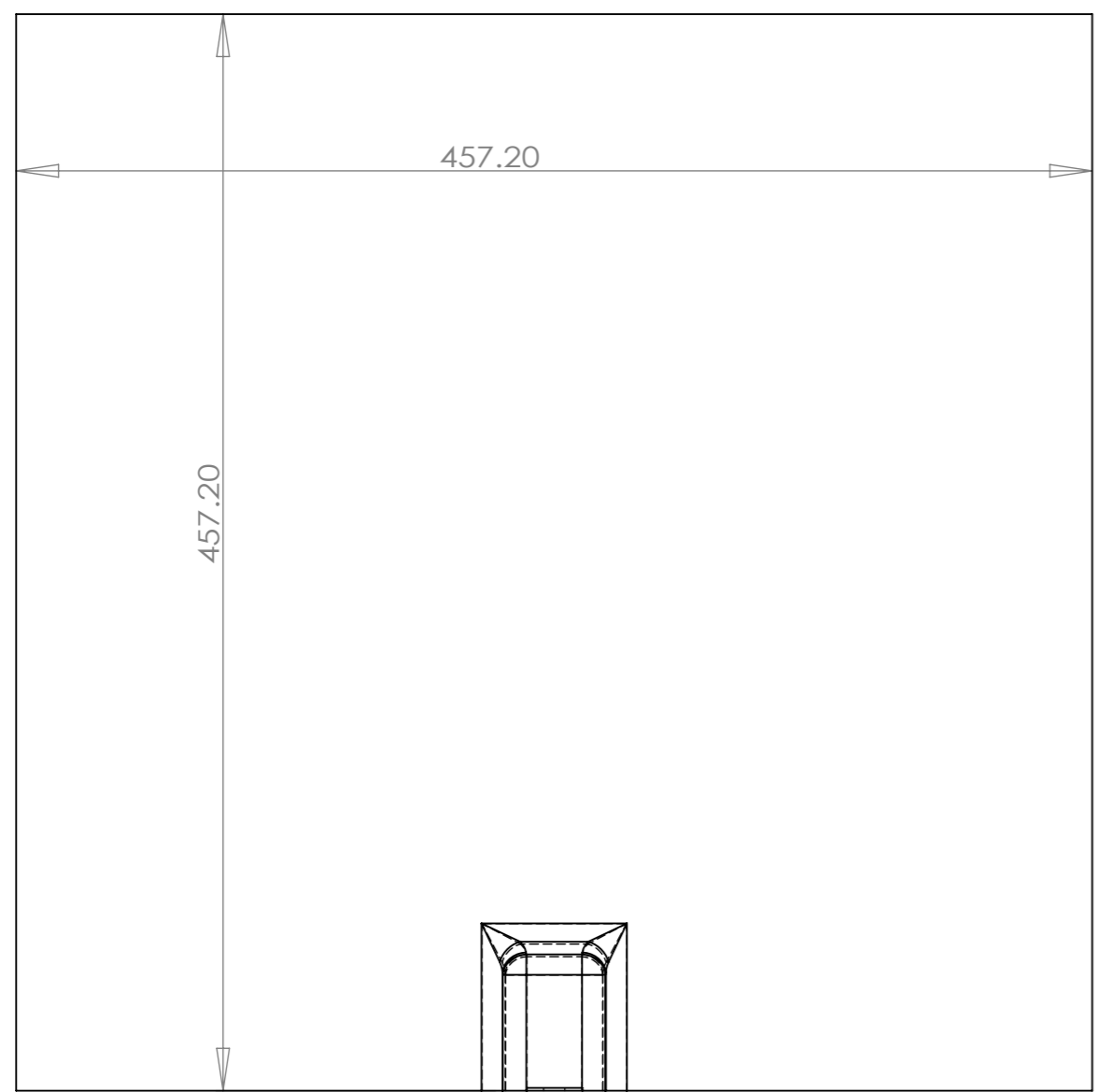
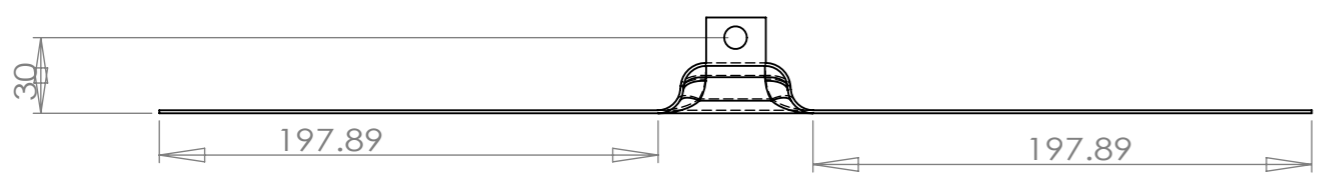


DETAIL A
SCALE 2 : 1



UNLESS OTHERWISE SPECIFIED: DIMENSIONS ARE IN MILLIMETERS				FINISH:		DEBUR AND BREAK SHARP EDGES		DO NOT SCALE DRAWING		REVISION	
SURFACE FINISH:											
TOLERANCES:											
LINEAR:											
ANGULAR:											
DRAWN		NAME		SIGNATURE		DATE		TITLE:		<p>Magerack Part Number: 101-006-100</p>	
CHK'D											
APPV'D											
MFG											
Q.A											
				MATERIAL:		3003 H14		DWG NO.		A3	
				WEIGHT:		154.9g		SCALE:1:3		SHEET 1 OF 1	
								L-foot Flashing			

Unit: mm
1 inch = 25.4 mm



UNLESS OTHERWISE SPECIFIED: DIMENSIONS ARE IN MILLIMETERS		FINISH:		DEBUR AND BREAK SHARP EDGES		DO NOT SCALE DRAWING		REVISION	
SURFACE FINISH:									
TOLERANCES:									
LINEAR:									
ANGULAR:									
	NAME	SIGNATURE	DATE			TITLE:			
DRAWN						<p style="text-align: center;">Magerack Part Number: 101-006-300</p>			
CHK'D									
APPV'D									
MFG									
Q.A						MATERIAL:	DWG NO.		
						3003 H14	L-foot Flashing for Shake Roof		
						WEIGHT: 683.98g	SCALE: 1:3		SHEET 1 OF 1