

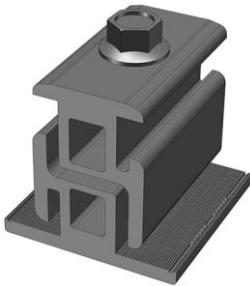


# MageMount Rail-less Solar Mounting System

## Product Catalog

**Material:** Aluminum alloy 6063-T5 or 6061-T6, aluminum 3003-H14, and 304 stainless steel  
**Finish:** Clear and black anodized or mill finish  
**Warranty:** 25-year limited warranty (except PV modules)

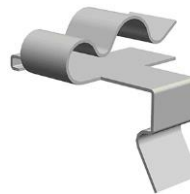
### Mounting Components



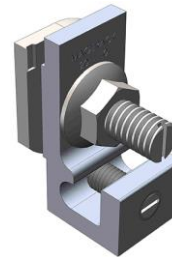
**Module Connector**  
(201-101)



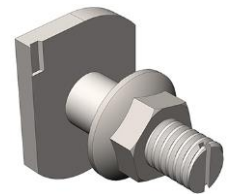
**Accessory Mounting Bracket**  
(201-104)



**Cable Clip**  
(201-108)



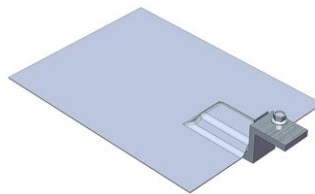
**Grounding Lug**  
(201-110)



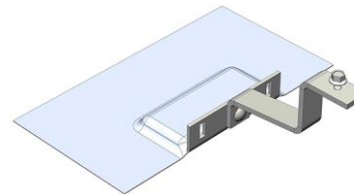
**MageBolt**  
(201-106)



**Skirt and Skirt End Caps**  
(201-165 and 201-166)



**Comp Conduit Mount**  
(201-122)



**Tile Conduit Mount**  
(201-126)

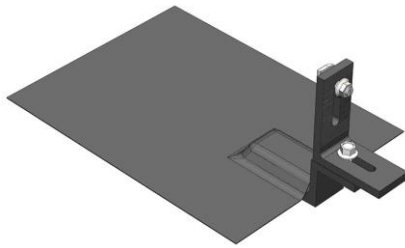


**Module Block**  
(201-501)

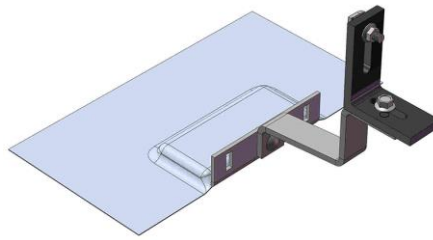
Part #	Description	Finish	Package Quantity
201-101	Module Connector	Black	50
201-104	Accessory Mounting Bracket	Black	40
201-108	Cable Clip	Clear	50
201-110	Grounding Lug	Clear	20
201-106	MageBolt with Flange Nut	Clear	20
201-165	Skirt with Fasteners 65.5" Long	Black	5
201-166	Skirt End Caps, Two with Screws	Black	2
201-122	Comp Conduit Mount	Black	20
201-126	Tile Conduit Mount	Clear	20
201-501	Module Block (Installation Tool)	Clear	2



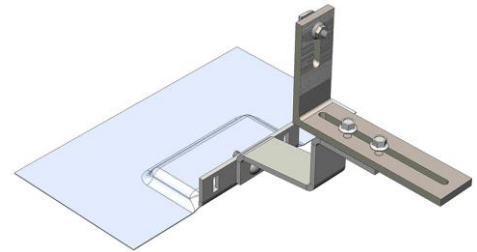
## Roof Attachments\*



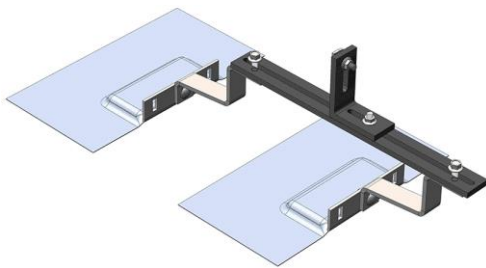
**Comp Foot or Tall Comp Foot with Flashing  
(201-302 or 201-304)**



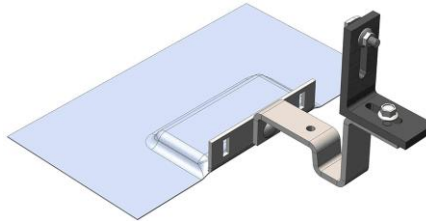
**Tile Foot  
(201-306)**



**Long Tile Foot  
(201-308)**



**Double Tile Feet  
(201-310)**



**Steel-Roof Tile Foot  
(201-312)**



**L Bracket  
(201-301)**



**Standoff 4" or 6"  
(201-314 or 201-316)**

Part #	Description	Finish	Package Quantity
201-302	Comp Foot with Flashing	Black	50
201-304	Tall Comp Foot with Flashing	Black	50
201-306	Tile Foot with Flashing	Black L Bracket	20
201-308	Long Tile Foot with Flashing	Black L Bracket	20
201-310	Double Tile Feet with Flashing	Black L Bracket	10
201-312	Steel-Roof Tile Foot with Flashing	Black L Bracket	20
201-301	L Bracket	Black	50
201-314	Standoff 4"	Clear	30
201-316	Standoff 6"	Clear	30

\* All roof attachments include MageBolt and flange nut.

## Modules with MageFrame



**Mono 60-cell Module with MageFrame  
(BVM6610M-260)**



**Poly 60-cell Module with MageFrame  
(BVM6610P-260)**

Part #	Manufacturer	Model	Description	Maximum Power (Pmax)	Finish
BVM-260	Boviet	BVM6610M-260	Monocrystalline 60-cell	260W	Black Frame / White Backsheet
BVP-260	Boviet	BVM6610P-260	Polycrystalline 60-cell	260W	Black Frame / White Backsheet

### Contact:

Magerack Corporation  
 4453 Enterprise Street  
 Fremont, CA 94538  
 Sales: 510-656-6661  
 Support: 510-656-6667  
 Fax: 510-656-6664  
 E-mail: [info@magerack.com](mailto:info@magerack.com)  
[www.magerack.com](http://www.magerack.com)

Doc: 201-001, January 2017

Copyright © 2017 Magerack Corporation. All rights reserved.  
 Magerack products are protected by U.S. patents and pending patents

[www.magerack.com](http://www.magerack.com)  
[sales@magerack.com](mailto:sales@magerack.com)  
 510-656-6661

