

MageMount Rail-less Solar Mounting System

Technical Datasheet

Module Connector

Part Number: 201-101

Material: Extruded aluminum alloy 6063-T5, 304 stainless steel

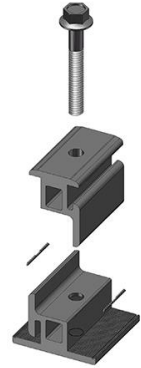
Finish: Black anodized

Installation: Use anti-seize and tighten to 16 ft-lbs torque

Certificate: UL 2703 Certified and Class 'A' Fire Rating

Components:

1. 5/16"-18 flange bolt
2. Connector top
3. Connector bottom
4. Bonding pins



Grounding Lug

Part Number: 201-110

Material: Extruded aluminum alloy 6063-T5, 304 stainless steel

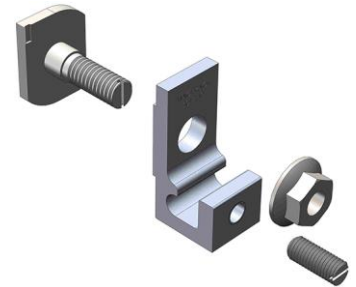
Finish: Tin-plated

Installation: Use anti-seize and tighten to 16 ft-lbs torque

Certificate: UL 2703 Certified and Class 'A' Fire Rating

Components:

1. 5/16"-18 MageBolt
2. 5/16"-18 flange nut
3. Grounding lug
4. 1/4"-28 set screw



Accessory Mounting Bracket

Part Number: 201-104

Material: Extruded aluminum alloy 6063-T5, 304 stainless steel

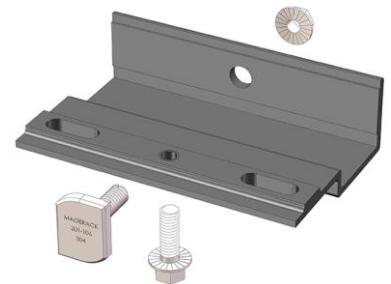
Finish: Black anodized

Installation: Use anti-seize and tighten to 16 ft-lbs torque

Certificate: UL 2703 Certified and Class 'A' Fire Rating

Components:

1. 5/16"-18 MageBolt
2. 5/16"-18 flange nut
3. Accessory mounting bracket



Cable Clip

Part Number: 201-108

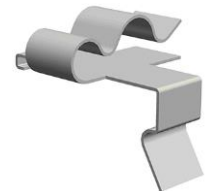
Material: 401 stainless steel

Finish: Clear finish

Installation: Snap on

Components:

1. Cable clip



MageBolt

Part Number: 201-106

Material: 304 stainless steel

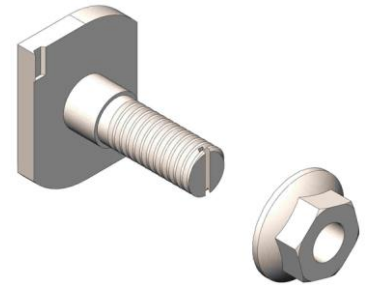
Finish: Clear finish

Installation: Use anti-seize and tighten to 16 ft-lbs torque

Certificate: UL 2703 Certified and Class 'A' Fire Rating

Components:

1. 5/16"-18 MageBolt
2. 5/16"-18 flange nut



Skirt and Skirt End Caps

Part Number: 201-165, 201-166

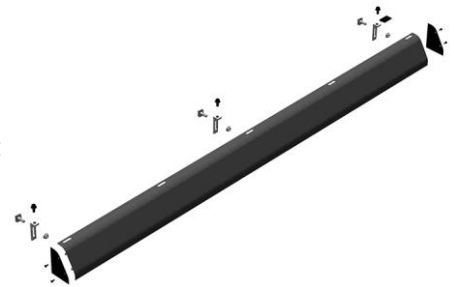
Material: Extruded aluminum alloy 6063-T5, 304 stainless steel

Finish: Black anodized

Installation: Use anti-seize and tighten to 16 ft-lbs torque

Components:

1. 5/16"-18 MageBolt
2. 5/16"-18 flange nut



Comp Conduit Mount

Part Number: 201-122

Material: Extruded aluminum alloy 6063-T5, aluminum 1060-O, 304 stainless steel

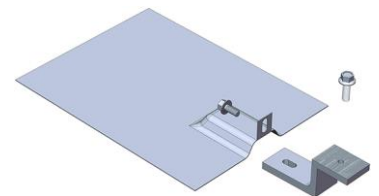
Finish: Clear anodized, mill finish

Installation: Use anti-seize and tighten to 16 ft-lbs torque

Certificate: UL 2703 Certified and Class 'A' Fire Rating

Components:

1. 5/16"-18 MageBolt
2. 5/16"-18 flange nut



Tile Conduit Mount

Part Number: 201-126

Material: Aluminum 1060-O, 304 stainless steel

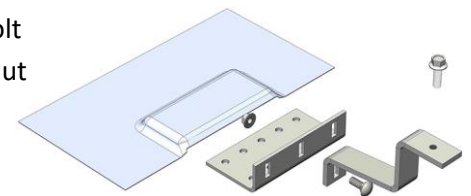
Finish: Clear finish, mill finish

Installation: Use anti-seize and tighten to 16 ft-lbs torque

Certificate: UL 2703 Certified and Class 'A' Fire Rating

Components:

1. 5/16"-18 MageBolt
2. 5/16"-18 flange nut



Roof Attachments

Comp Foot with Flashing for Composition Shingle Roof

Part Number: 201-302

Material: Extruded aluminum alloy 6063-T5, aluminum 1060-O, 304 stainless steel

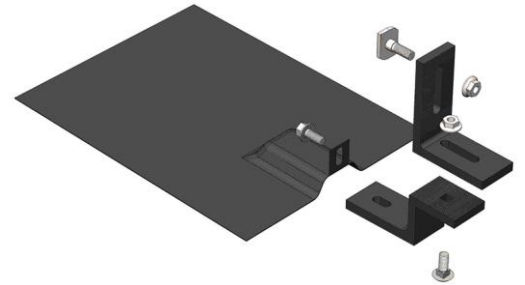
Finish: Black anodized

Installation: Use anti-seize and tighten to 16 ft-lbs torque

Certificate: UL 2703 Certified and Class 'A' Fire Rating

Components:

1. 5/16"-18 MageBolt
2. L bracket
3. 5/16"-18 flange nuts
4. 5/16"-18 flange bolt
5. 5/16"-18 carriage bolt
6. Comp foot base
7. Comp foot flashing



Tile Foot with Flashing for Tile Roof

Part Number: 201-306

Material: Extruded aluminum alloy 6063-T5, aluminum 1060-O, 304 stainless steel

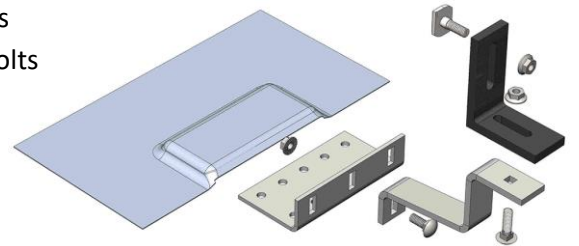
Finish: Black anodized, clear finish, mill finish

Installation: Use anti-seize and tighten to 16 ft-lbs torque

Certificate: UL 2703 Certified and Class 'A' Fire Rating

Components:

1. 5/16"-18 MageBolt
2. 5/16"-18 flange nuts
3. 5/16"-18 carriage bolts
4. L bracket
5. Tile foot arm
6. Tile foot base
7. Tile foot flashing



Long Tile Foot with Flashing for Tile Roof

Part Number: 201-308

Material: Extruded aluminum alloy 6063-T5, aluminum 1060-O, 304 stainless steel

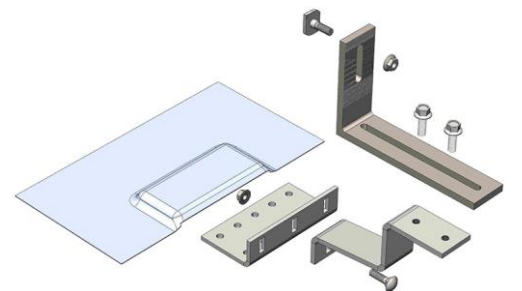
Finish: Black finish, clear finish, mill finish

Installation: Use anti-seize and tighten to 16 ft-lbs torque

Certificate: UL 2703 Certified and Class 'A' Fire Rating

Components:

1. 5/16"-18 MageBolt
2. 5/16"-18 flange nuts
3. 5/16"-18 flange bolts
4. Long L bracket
5. Tile foot arm
6. 5/16"-18 carriage bolt
7. Tile foot base
8. Tile foot flashing



Double Tile Feet with Flashing for Tile Roof

Part Number: 201-310

Material: Extruded aluminum alloy 6063-T5, aluminum 1060-O, 304 stainless steel

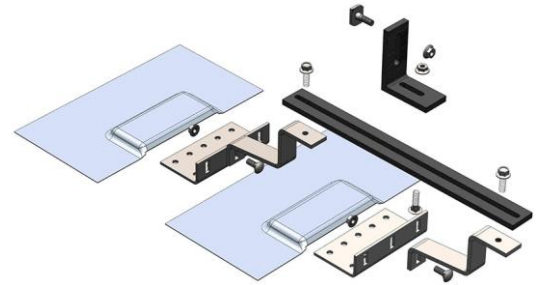
Finish: Black anodized, clear finish, mill finish

Installation: Use anti-seize and tighten to 16 ft-lbs torque

Certificate: UL 2703 Certified and Class 'A' Fire Rating

Components:

1. 5/16"-18 MageBolt
2. L Bracket
3. 5/16"-18 flange nuts
4. 5/16"-18 flange bolts
5. 5/16"-18 carriage bolts
6. Double tile feet bridge
7. Tile foot arms
8. Tile foot bases
9. Tile foot flashings



Steel-Roof Tile Foot with Flashing for Stone-Coated Steel Roof

Part Number: 201-312

Material: Extruded aluminum alloy 6063-T5, aluminum 1060-O, 304 stainless steel

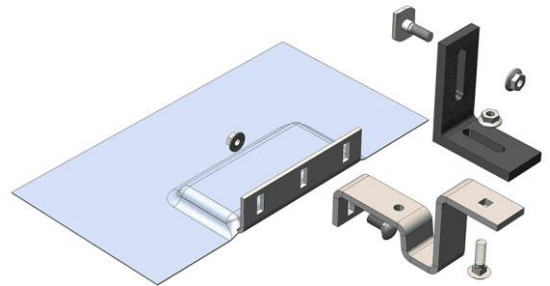
Finish: Black anodized, clear finish, mill finish

Installation: Use anti-seize and tighten to 16 ft-lbs torque

Certificate: UL 2703 Certified and Class 'A' Fire Rating

Components:

1. 5/16"-18 MageBolt
2. 5/16"-18 flange nuts
3. 5/16"-18 carriage bolts
4. L bracket
5. Tile foot arm
6. Tile foot base
7. Tile foot flashing



Standoff

Part Number: 201-314 or 201-316

Material: Extruded aluminum alloy 6063-T5, 304 stainless steel

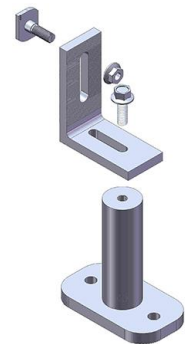
Finish: Clear anodized

Installation: Use anti-seize and tighten to 16 ft-lbs torque

Certificate: UL 2703 Certified and Class 'A' Fire Rating

Components:

1. 5/16"-18 MageBolt
2. 5/16"-18 flange nut
3. 5/16"-18 flange bolt
4. L bracket
5. Standoff post
6. Standoff base



L Bracket

Part Number: 201-301

Material: Extruded aluminum alloy 6063-T5, 304 stainless steel

Finish: Black anodized

Installation: Use anti-seize and tighten to 16 ft-lbs torque

Certificate: UL 2703 Certified and Class 'A' Fire Rating

Components:

1. 5/16"-18 MageBolt
2. L bracket
3. 5/16"-18 flange nut

