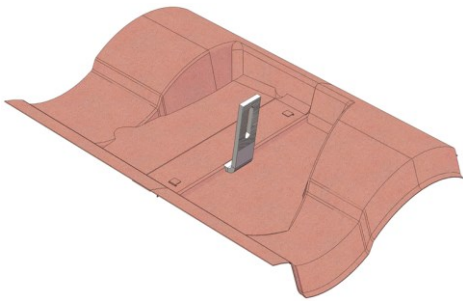
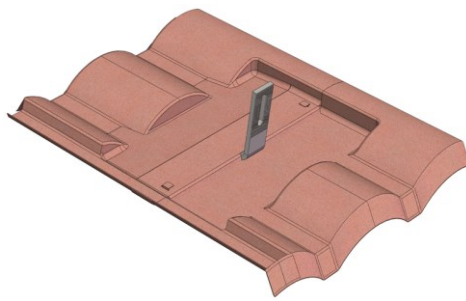


MageHook with Tile Replacement Flashing

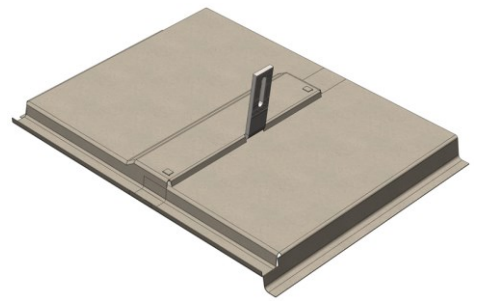
MageHook - Height-Adjustable Tile Hook with Tile Replacement Flashing, is roof attachment for solar installation on S tile, W tile or flat tile roofs. It has three components, top tile replacement flashing, height-adjustable tile hook with lag screws and bottom tile replacement flashing. An optional flashing for MageHook is available for waterproofing MageHook base plate.



MageHook S



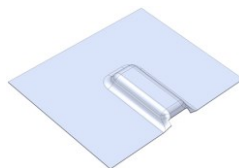
MageHook W



MageHook Flat

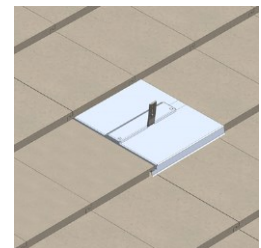
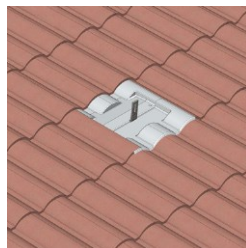
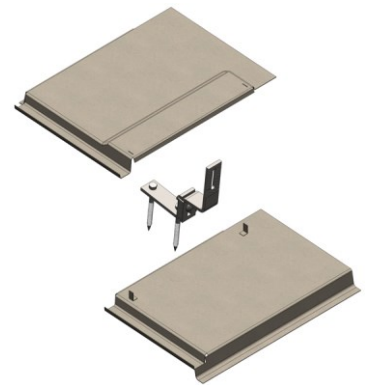


MageHook Only



Flashing for MageHook

Part #	Name	Description
101-301	MageHook S	Height-Adjustable Tile Hook with S Tile Replacement Flashing
101-303	MageHook W	Height-Adjustable Tile Hook with W Tile Replacement Flashing
101-305	MageHook F	Height-Adjustable Tile Hook with Flat Tile Replacement Flashing
101-116	MageHook only	Height-Adjustable Tile Hook only
008-300	Flashing for MageHook	Optional Flashing for MageHook



Installation Instructions – MageHook with S, W or Flat Tire Replacement Flashing



Step 1: Remove the tile where MageHook will be installed. Place bottom replacement flashing and make sure locking pins are pointing upward.



Step 2: Locate rafter and secure MageHook to the rafter with provided lag screws. Adjust height of the MageHook to fit above bottom replacement flashing and tighten the nut.



Step 3: This step is optional. Place optional Flashing for MageHook above MageHook bottom plate. If MageHook is installed near left or right side of the tiles, the left or right tile may need to be lifted up or removed temporarily.



Step 4: Cut a notch at the bottom lip of the top replacement flashing where MageHook is located and install top replacement flashing above MageHook. Make sure locking pins pass through the holes and press down lock pins to lock top and bottom replacement flashings together.